

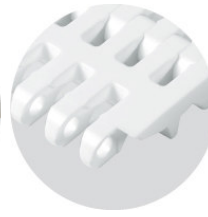
# Solution Guide



uni MPB C  
Straight Running Belt



uni MPB 20%  
Straight Running Belt



uni MPB 22%  
Straight Running Belt

Industry

> **Vegetables**

Application

> **Washing process**

Description

> **Inclined conveyors for vegetables processing lines**

*These conveyors are typically used for the first vegetable wash. They work in a dirty environment.*



uni MPB 22% Open in D material



uni MPB C in D material

## Problems

### > Problem 1

As the water is often very dirty which causes wear on the belt surface and elongation of the pins and pin holes.

### > Problem 2

The product load can be very high and often the product is dumped on to the belt. Product support breakage can happen as a result of this impact.

### > Problem 3

Belt elongation is a problem due to pin wear.

### > Problem 4

Depending on the size and nature of the vegetables the belt requires different surface openings.

## Solutions

### > Solution 1

The POM belt material with SS pins gives strength to the belt and ensures long wear life with good resistance to elongation.

### > Solution 2

uni MPB product support is 10 mm thickness compared to the 7 mm of the competition. This extra material provides superior resistance to impact breakage.

### > Solution 3

uni MPB pins are 8 mm thickness against 6-7 mm of the competition. This creates a larger wear surface for the pin to resist wear and, therefore, elongation

### > Solution 4

uni MPB series provides a wide range of surface openings: 0%, 18%, 20% and 22%.