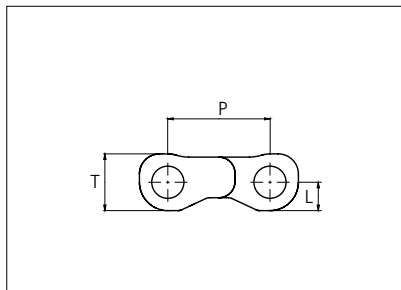
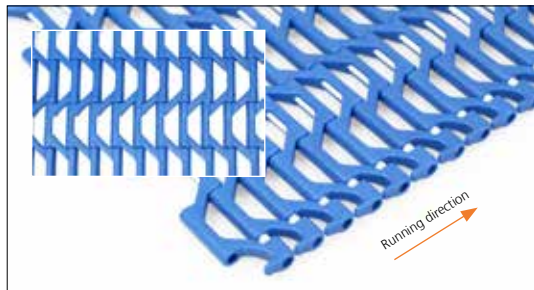




Plastic Modular Belt

Series **uni M-OWL** Type **40% Open**



Straight Running
 Nominal pitch: 12.7 mm (0.50 in)
 Contact area: 8%
 Surface opening: 40%
 Backflex radius: 12.5 mm (0.49 in)
 Pin diameter: 4.0 mm (0.16 in)
 Largest opening: 7.6 x 23 mm
 (0.30 x 0.91 in)

Belt material & color	POM-D B W		mm	in		mm	in
Pin material & color	PP W	P (Nominal)	12.7	0.50	T	7.2	0.28
		L	3.6	0.14	-	-	-

Non standard material and color: See uni Material and Color Overview.

Alternative pin materials: Lockpin: PA6.6 **B**

Belt width		Permissible tensile force (Belt material)		Belt weight (Belt material)		*Min. No. drive sprocket per shaft	Number of wear strips (Min. No.)	
		POM-D		POM-D			**Carry (pcs)	**Return (pcs)
mm	in	N	lbf	kg/m	lb/ft			
203	8.0	914	205	0.9	0.59	2	2	2
254	10.0	1143	257	1.1	0.74	3	2	2
305	12.0	1373	309	1.3	0.89	4	3	2
356	14.0	1602	360	1.5	1.04	4	3	2
407	16.0	1832	412	1.8	1.18	5	3	2
457	18.0	2057	462	2.0	1.33	5	4	2
508	20.0	2286	514	2.2	1.48	5	4	2
559	22.0	2516	565	2.4	1.63	6	4	2
610	24.0	2745	617	2.6	1.78	7	5	3
660	26.0	2970	668	2.9	1.92	7	5	3
711	28.0	3200	719	3.1	2.07	7	5	3
762	30.0	3429	771	3.3	2.22	8	6	3

Additional standard belt widths are available in steps of 50.7 mm (2.00 in).

1980	78.0	8910	2003	8.6	5.76	20	14	7
------	------	------	------	-----	------	----	----	---

Additional standard belt widths are available in steps of 50.7 mm (2.00 in).

2996	118.0	13482	3031	13.0	8.72	30	20	10
------	-------	-------	------	------	------	----	----	----

General belt tolerance is +0/-0.4% at 23°C/73°F and 50% RH. For exact belt width contact Customer Service.

*Max. Load per Drive Sprocket. Belt material: POM-D with snub roller 1000 N (450 lbf) without snub roller 500 N (281 lbf).

**Max. Spacing between wear strips, Carry: 152.0 mm (6.00 in); Return: 304.0 mm (12.00 in).

= Single Link



STANDARD

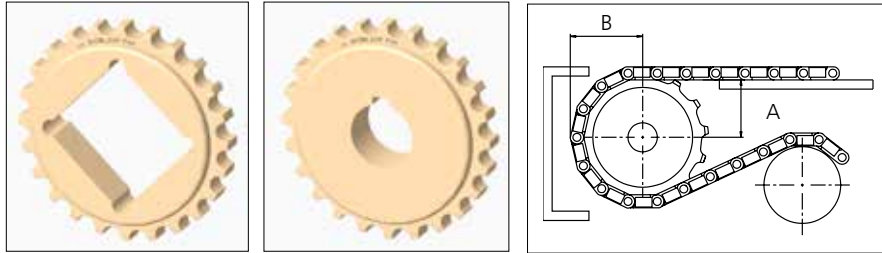
STRAIGHT RUNNING

PITCH 12.7 MM/0.50 IN

Sprocket

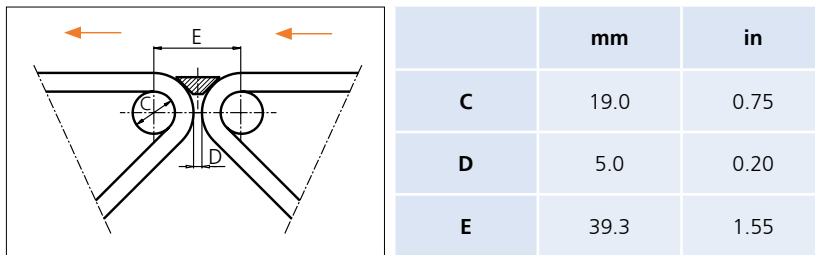
No. of teeth	Bore size													Overall diameter		Pitch-diameter		Hub-diameter		A-dimension		B-dimension		Single row/Two way	Double row/Two way	Molded PA6 LG	Machined PA6 N
	Pilot bore		in	0.75	0.78	0.98	1.00	1.18	1.25	1.50	1.57	2.36	2.50														
	mm	19.1	20.0	25.0	25.4	30.0	31.8	38.1	40.0	60.0	63.5	90.0	mm	in	mm	in	mm	in	mm	in							
Z14	x		●	●●								61.4	2.42	58.0	2.28	44.9	1.77	24.73	0.97	32.7	1.29	x			x		
Z17	x			●●	●●							73.6	2.90	70.2	2.76	57.1	2.25	30.98	1.22	38.79	1.53	x			x		
Z19	x				●				●●	●●		81.8	3.22	78.4	3.09	65.3	2.57	35.13	1.38	42.86	1.69	x			x		
Z24	x							●●	●●	●●		102.2	4.02	98.8	3.89	85.8	3.38	45.47	1.79	53.06	2.09	x			x		
Z36	x							●●	●●	●●		151.4	5.96	148	5.83	134.9	5.31	70.20	2.76	77.61	3.06	x			x		

■ Machined sprocket ● Machined sprocket



Non standard material and color: See uni Material and Color Overview.

Nosebars Min. Dimensions



Other sprocket sizes are available upon request.
 Two-part sprocket are available upon request.
 Round bores are always delivered with keyway.
 Other bore sizes are available upon request.
 uni Retainer Rings: See uni Retainer Ring data sheet.
 Width of tooth = 11.0 mm (0.43 in)
 Width of sprocket = 20.0 mm (0.79 in)

Max load per sprocket shown does not take bore size into account.
 Please also ensure that sufficient size shaft is chosen for corresponding load.

For correct sprocket position: See uni Assembly Instructions for uni M-OWL.
 For more detailed sprocket information. contact Customer Service.

uni M-OWL M1 40% Open/170522



Expert advice, quality solutions and local service for all your belting needs
www.ammeraalbeltech.com

Ammeraal Beltech Modular A/S
 Hjulmagervej 21
 DK-7100 Vejle

T +45 7572 3100
 F +45 7572 3348
 admin@unichains.com
 www.unichains.com

This information is subject to alteration due to continuous development. Ammeraal Beltech will not be held liable for the incorrect use of the above stated information. This information replaces previous information. All activities performed and services rendered by Ammeraal Beltech are subject to general terms and conditions of sale and delivery, as applied by its operating companies.