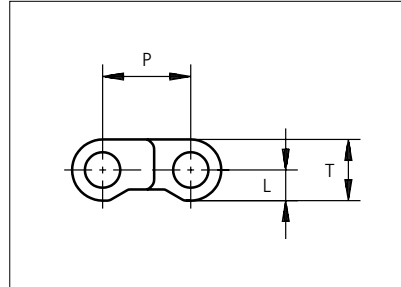
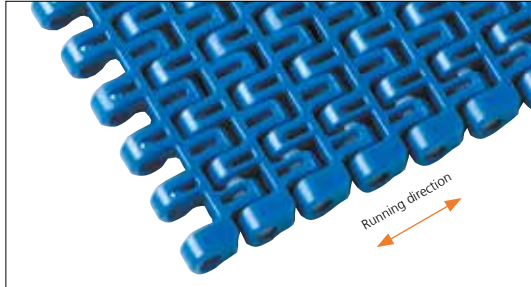




Plastic Modular Belt

Series **uni M-SNB** Type **M3 14%**



Straight running belt
 Nominal pitch: 12.7 mm (0.50 in)
 Surface type: Flat
 Surface opening: 14%
 Backflex radius: 20.0 mm (0.80 in)
 Pin diameter: 5.00 mm (0.20 in)

STANDARD

Belt material & color	POM-D B	POM-LF BR	PP W								
Pin material & color	PP B	PP W									
						P (Nominal)	12.7	0.50	T	8.8	0.35
						L	4.4	0.17	-	-	-

Non standard material and color: See uni Material and Color Overview.

Alternative pin and lock materials: Pin: PA6.6 **B** PE **W** PBT **LG** SS304 Endlock: PP **B** **W**
 Lockpin: PBT **LG** PA6.6 **D** PP **B** **W** PE **N**

STRAIGHT RUNNING

Belt width		Permissible tensile force (Belt/pin material)				Belt weight (Belt/pin material)				*Min. No. drive sprocket per shaft	Number of wear strips (Min. No.)	
		POM/PP		PP/PP		POM/PP		PP/PP			**Carry (pcs)	**Return (pcs)
mm	in	N	lbf	N	lbf	kg/m	lb/ft	kg/m	lb/ft			
77	3.0	1155	260	578	130	0.5	0.33	0.3	0.21	2	2	2
153	6.0	2295	516	1148	258	1.0	0.65	0.6	0.42	2	2	2
229	9.0	3435	772	1718	386	1.4	0.97	0.9	0.63	2	2	2
305	12.0	4575	1028	2288	514	1.9	1.29	1.3	0.84	3	3	2
381	15.0	5715	1285	2858	642	2.4	1.61	1.6	1.05	3	3	2
458	18.0	6870	1544	3435	772	2.9	1.94	1.9	1.26	4	4	2
534	21.0	8010	1801	4005	900	3.4	2.26	2.2	1.47	4	4	2
610	24.0	9150	2057	4575	1028	3.8	2.58	2.5	1.68	5	5	3
686	27.0	10290	2313	5145	1157	4.3	2.90	2.8	1.89	5	5	3
762	30.0	11430	2569	5715	1285	4.8	3.23	3.1	2.10	6	6	3
839	33.0	12585	2829	6293	1415	5.3	3.55	3.4	2.31	6	6	3
915	36.0	13725	3085	6863	1543	5.8	3.87	3.8	2.52	7	7	4

Additional standard belt widths are available in steps of 76.2 mm (3.00 in). Additional non-standard belt widths are available in steps of 12.7 mm (0.50 in).

1982	78.0	29730	6683	14865	3342	12.5	8.39	8.1	5.46	14	14	7
------	------	-------	------	-------	------	------	------	-----	------	----	----	---

Additional standard belt widths are available in steps of 76.2 mm (3.00 in). Additional non-standard belt widths are available in steps of 12.7 mm (0.50 in).

2972	117.0	44580	10022	22290	5011	18.7	12.58	12.2	8.19	20	20	10
------	-------	-------	-------	-------	------	------	-------	------	------	----	----	----

General belt tolerance is +0/-0.4% at 23°C/73°F and 50% RH. For exact belt width contact Customer Service. Non standard belt width on request.

*Max. Load per Drive Sprocket. Belt material: POM-SLF 1000 N (225 lbf). PP 800 N (180 lbf), PE 800 N (180 lbf).

**Max. Spacing between wear strips. Carry: 152.0 mm (6.00 in); Return: 304.0 mm (12.00 in).

= Single Link


PITCH 12.7 MM/0.50 IN



Accessories

Top/Bottom Insert



Type	Rubber material & color	A		B		C	
		mm	in	mm	in	mm	in
Rubber	01 	14.0	0.55	8.0	0.31	3.0	0.12

Rubber inserts can be assembled in any belt surface upon customer request.
 Non Standard material and color: See uni Material and Color Overview.

Sprocket

No. of teeth	Bore size							Overall diameter		Pitch-diameter		Hub-diameter		Dimension A		Dimension B		Single row/Two way	Molded	PAG LG
	Pilot bore	in		mm		mm														
	mm	25.0	25.4	30.0	31.8	38.1	40.0	mm	in	mm	in	mm	in	mm	in					
Z10	✓							41.5	1.63	41.6	1.64	28.0	1.10	16.1	0.63	25.0	0.98	✓	✓	
Z19	✓		●	●	●	●	■	79.0	3.11	78.1	3.07	65.0	2.56	34.1	1.34	43.0	1.69	✓	✓	
Z28	✓			●	●	●	■	116.2	4.57	115	4.53	65.0	2.56	52.2	2.06	61.1	2.41	✓	✓	
Z38	✓				●	●	■	157.4	6.20	156	6.14	100.0	2.95	72.5	2.85	81.3	3.20	✓	✓	

■ Molded sprocket

● Molded sprocket



Other sprocket sizes are available upon request.

Other bore sizes on sprockets are available upon request.

Round bores are always delivered with keyway.

Max. load per sprocket shown does not take bore size into account.

Please also ensure that sufficient size shaft is chosen for corresponding load.

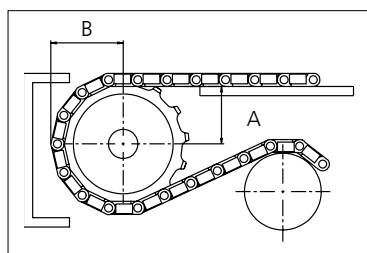
Width of tooth = Single row: 7.0 mm (0.28 in)

Width of One-part sprocket = Single row: 20.0 mm (0.79 in)

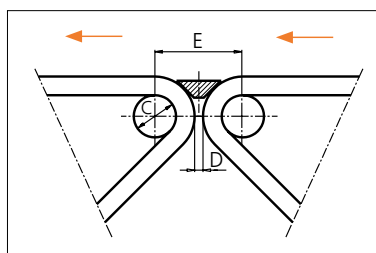
uni UltraClean Two-Part Sprocket

No. of teeth	Bore size			Overall diameter		Pitch-diameter		Hub-diameter		Dimension A		Dimension B		Single row/Two way	Molded	PAG W
	in	1.50	1.57													
	mm	38.1	40.0	mm	in	mm	in	mm	in	mm	in					
Z28		■	■	114.9	4.52	113.4	4.46	80.0	3.15	52.2	2.06	61.1	2.41	✓	✓	
Z38			■	155.5	6.12	153.8	6.06	126.0	4.96	72.5	2.85	81.3	3.20	✓	✓	

■ Moulded uni UltraClean TwoPart Sprocket



Nosebars Min. Dimensions



	mm	in
C	20.0	0.79
D	4.0	0.16
E	41.6	1.64

Width of UltraClean Two-part sprocket = Single row: 44.0 mm (1.73 in)

Width of UltraClean Two-part sprocket, tooth = Single row: 7.0 mm (0.28 in)

uni Retainer Rings: See uni Retainer Ring data sheet.

For correct sprocket position: See uni Assembly Instructions for uni M-SNB.

For more detailed sprocket information, contact Customer Service.



Conveyor Belts



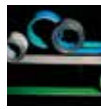
Seamless Belts



Modular Belts



Timing Belts



Transmission Belts



Fabrication & service

Expert advice, quality solutions
and local service
for all your belting needs
www.ammeraalbeltech.com

Ammeraal Beltech Modular A/S
Hjulmagervej 21
DK-7100 Vejle

T +45 7572 3100
F +45 7572 3348
admin@unichains.com
www.unichains.com

This information is subject to alteration due to continuous development. Ammeraal Beltech will not be held liable for the incorrect use of the above stated information. This information replaces previous information. All activities performed and services rendered by Ammeraal Beltech are subject to general terms and conditions of sale and delivery, as applied by its operating companies.