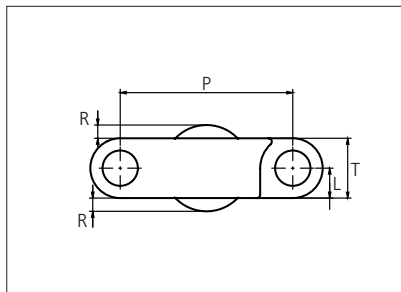
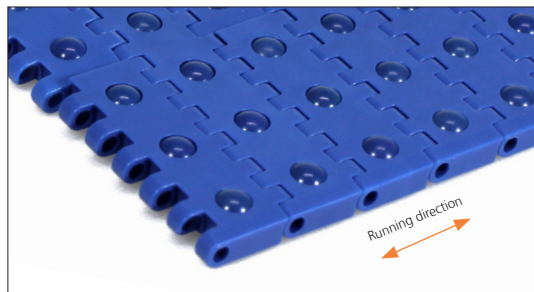




Plastic Modular Belt

Series **uni QNB** Type **Ball**



Straight running belt
 Nominal pitch: 25.4 mm (1.00 in)
 Surface type: Ball
 Surface opening: Closed
 Backflex radius: 25.0 mm (0.98 in)
 Pin diameter: 5.0 mm (0.20 in)

Belt material & color	POM-SLF B		mm	in		mm	in
Ball material & color	PA6.6 N B	P (Nominal)	25.4	1.00	R	1.95	0.08
Pin material & color	PP B	L	4.4	0.17	T	8.8	0.35

Non standard material and color: See uni Material and Color Overview.

Belt width		Permissible tensile force (Belt/pin material)		Belt weight (Belt/pin material)		*Min No drive sprocket per shaft	Number of wear strips (min no)	
		POM-SLF/PP		POM-SLF/PP			**Carry (pcs)	**Return (pcs)
mm	in	N	lbf	Kg/m	lb/ft			
153	6.0	3443	774	1.4	0.96	2	2	2
229	9.0	5153	1158	2.1	1.43	2	2	2
305	12.0	6863	1543	2.8	1.91	3	3	2
381	15.0	8573	1927	3.5	2.38	3	3	2
457	18.0	10283	2312	4.3	2.86	4	4	2
533	21.0	11993	2696	5.0	3.33	4	4	2
609	24.0	13703	3080	5.7	3.81	5	5	3
685	27.0	15413	3465	6.4	4.28	5	5	3
761	30.0	17123	3849	7.1	4.76	6	6	3
838	33.0	18855	4239	7.8	5.24	6	6	3
914	36.0	20565	4623	8.5	5.71	7	7	4
990	39.0	22275	5007	9.2	6.19	7	7	4
1066	42.0	23985	5392	9.9	6.66	8	8	4
1979	77.9	44528	10010	18.4	12.37	14	14	7
2968	116.9	66780	15012	27.6	18.55	20	20	10

Additional standard belt widths are available in steps of 76.3 mm (3.00 in).

1979	77.9	44528	10010	18.4	12.37	14	14	7
------	------	-------	-------	------	-------	----	----	---

Additional standard belt widths are available in steps of 76.3 mm (3.00 in).

2968	116.9	66780	15012	27.6	18.55	20	20	10
------	-------	-------	-------	------	-------	----	----	----

General belt tolerance is +0/-0.4% at 23°C/73°F and 50% RH. For exact belt width contact Customer Service.

*Max. Load per Drive Sprocket. Belt material: POM-SLF 1840 N (414 lbf)

**Max. Spacing between wear strips, Carry: 152 mm (6 in); Return: 304 mm (12 in).

= Single Link



STANDARD

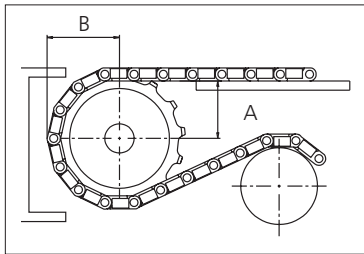
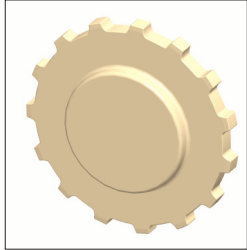
STRAIGHT RUNNING

PITCH 25.4 MM/1.00 IN

Sprocket

No. of teeth	Bore size						Overall diameter		Pitch diameter		Hub diameter		Dimension A		Dimension B		Single row/Two way	Double row/Two way	Molded	Machined				
	Pilot bore	1.50		2.36		2.50																		
	mm	in	mm	in	mm	in	mm	in	mm	in	mm	in	mm	in	mm	in	PA6	PA6	PA6					
Z15	x		38.1	1.50	40.0	1.57	60.0	2.36	63.5	2.50	121.5	4.78	122.5	4.82	100.0	3.93	55.4	2.18	66.1	2.60	x			x
Z18	x		38.1	1.50	40.0	1.57	60.0	2.36	63.5	2.50	146.1	5.75	146.3	5.76	120.0	4.72	67.6	2.66	78.4	3.08	x			x
Z19	x		38.1	1.50	40.0	1.57	60.0	2.36	63.5	2.50	154.2	6.07	154.3	6.07	125.0	4.92	71.7	2.82	82.5	3.24	x			x

Machined sprocket



Other sprocket sizes are available upon request.
 Two-part sprockets are available upon request.
 Round bores are always delivered with keyway.
 Other bore sizes are available upon request.
 uni Retainer Rings: See uni Retainer Ring data sheet.
 Width of tooth = 8.0 mm (0.31 in)
 Width of sprocket = 25.0 mm (0.98 in)

Max load per sprocket shown does not take bore size into account.
 Please also ensure that sufficient size shaft is chosen for corresponding load.

For correct sprocket position: See uni Assembly Instructions for uni QNB Ball.
 For more detailed sprocket information, contact Customer Service.

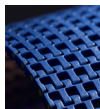
Non standard material and color: See uni Material and Color Overview.



Conveyor Belts



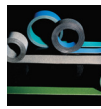
Seamless Belts



Modular Belts



Timing Belts



Transmission Belts



Fabrication & service

Expert advice, quality solutions and local service for all your belting needs
www.ammeraalbeltech.com

Ammeraal Beltech Modular A/S
 Hjulmagervej 21
 DK-7100 Vejle

T +45 7572 3100
 F +45 7572 3348
 admin@unichains.com
 www.unichains.com

This information is subject to alteration due to continuous development. Ammeraal Beltech will not be held liable for the incorrect use of the above stated information. This information replaces previous information. All activities performed and services rendered by Ammeraal Beltech are subject to general terms and conditions of sale and delivery, as applied by its operating companies.