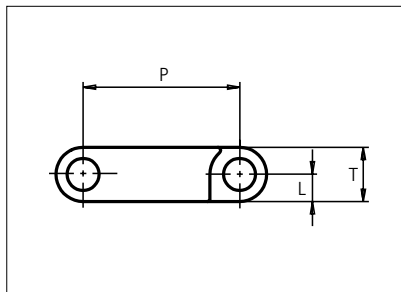
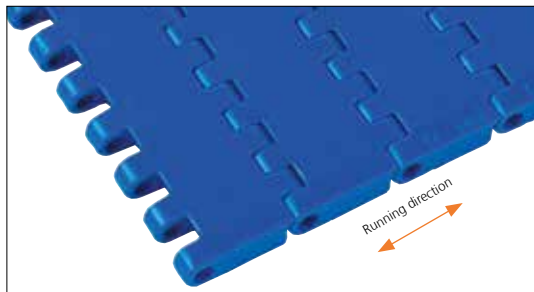




Plastic Modular Belt

Series **uni QNB** Type **C**



Straight running belt
 Nominal pitch: 25.4 mm (1.00 in)
 Surface type: Flat
 Surface opening: Closed
 Backflex radius: 40.0 mm (1.57 in)
 Pin diameter: 5.0 mm (0.19 in)

Belt material & color	POM-SLF B	PP B	PP W		mm	in		mm	in	
					P (Nominal)	25.4	1.00	L	4.4	0.17
Pin material & color	⚙️ PP B		⚙️ PP W		T	8.8	0.35	-	-	-

Non standard material and color: See uni Material and Color Overview.

Alternative pin and lock materials: ⚙️ Solid Lockpin: PA6.6 **D** ⚙️ Pin: PP **W** PA6.6 **B** PE **W** PBT **LG** and SS304 🔒 Endlock: PA6.6 **D**
 ⚙️ Lockpin: PBT **LG** PA6.6 **D** **N** PP **B** **W**

Belt width		Permissible tensile force (Belt/pin material)				Belt weight (Belt/pin material)				*Min. No. drive sprocket per shaft	Number of wear strips (Min. No.)	
		POM-SLF/PP		PP/PP		POM-SLF/PP		PP/PP			**Carry (pcs)	**Return (pcs)
mm	in	N	lbf	N	lbf	kg/m	lb/ft	kg/m	lb/ft			
39	1.5	1365	307	780	175	0.3	0.22	0.2	0.14	1	1	1
51	2.0	1768	397	1010	227	0.4	0.29	0.3	0.18	2	1	1
77	3.0	2695	606	1540	346	0.6	0.43	0.4	0.28	2	2	2
153	6.0	5355	1204	3060	688	1.3	0.86	0.8	0.56	2	2	2
229	9.0	8015	1802	4580	1030	1.9	1.29	1.2	0.83	2	2	2
305	12.0	10675	2400	6100	1371	2.6	1.72	1.6	1.11	3	3	2
382	15.0	13370	3006	7640	1717	3.2	2.16	2.1	1.39	3	3	2
458	18.0	16030	3604	9160	2059	3.8	2.59	2.5	1.66	4	4	2
534	21.0	18690	4202	10680	2401	4.5	3.01	2.9	1.94	4	4	2
610	24.0	21350	4799	12200	2743	5.1	3.44	3.3	2.21	5	5	3
687	27.0	24045	5405	13740	3089	5.8	3.88	3.7	2.49	5	5	3
763	30.0	26705	6003	15260	3430	6.4	4.31	4.1	2.77	6	6	3

Additional standard belt widths are available in steps of 76.3 mm (3.00 in). Additional non-standard belt widths are available in steps of 25.4 mm (1.00 in).

1983	78.1	69405	15602	39660	8916	16.7	11.19	10.7	7.20	14	14	7
------	------	-------	-------	-------	------	------	-------	------	------	----	----	---

Additional standard belt widths are available in steps of 76.3 mm (3.00 in). Additional non-standard belt widths are available in steps of 25.4 mm (1.00 in).

2974	117.1	104090	23399	59480	13371	25.0	16.79	16.1	10.79	20	20	10
------	-------	--------	-------	-------	-------	------	-------	------	-------	----	----	----

General belt tolerance is +0/-0.4% at 23°C/73°F and 50% RH. For exact belt width contact Customer Service. Non standard belt width on request.

*Max. Load per Drive Sprocket. Belt material: POM-SLF 2300 N (517 lbf), PP 1300 N (292 lbf).

**Max. Spacing between wear strips, Carry: 152.0 mm (6.00 in); Return: 304.0 mm (12.00 in).

□ = Single Link



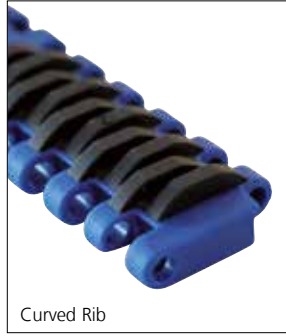
STANDARD

STRAIGHT RUNNING

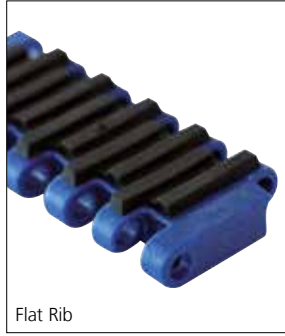
PITCH 25.4 MM/1.00 IN

Accessories

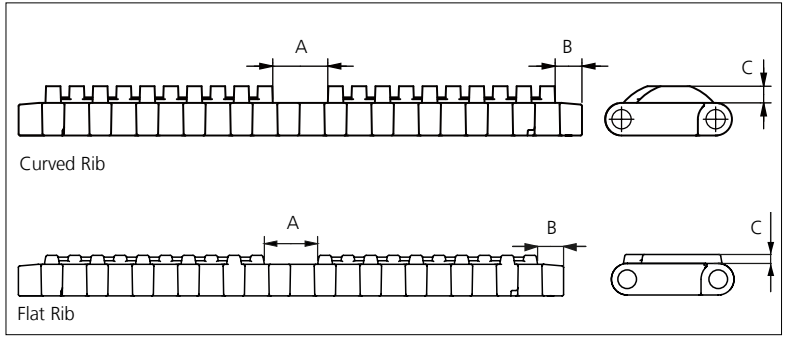
Rubber Top



Curved Rib



Flat Rib

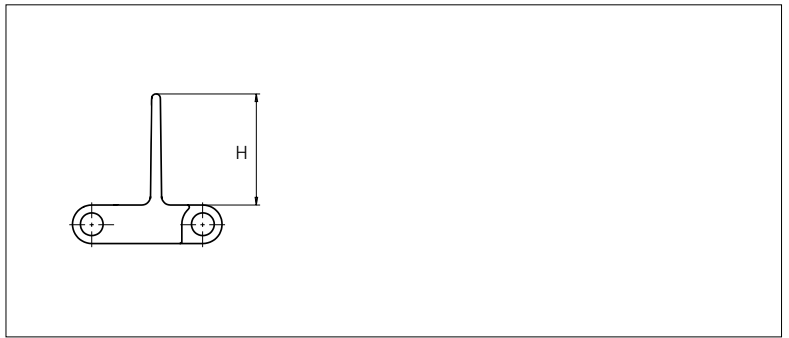
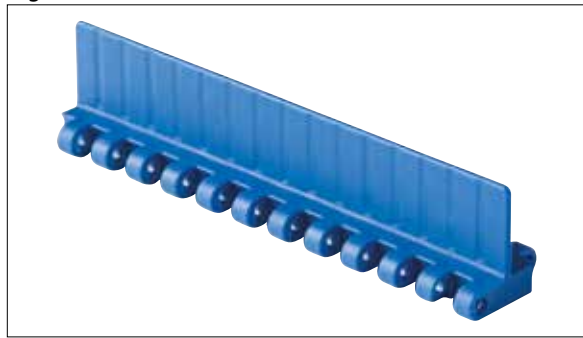


Type	Belt Material & color	Rubber Material & color	A		B		C		Link size	Width	
			mm	in	mm	in	mm	in		mm	in
Curved Rib	PP B	03 K	14.9	0.59	7.3	0.29	4.5	0.18	K300	75.8	2.98
			K600	152.0	5.98						
Flat Rib	PP B	03 K	14.85	0.58	7.25	0.29	2.5	0.10	K300	75.8	2.98
			K600	152.0	5.98						

Non Standard material and color: See uni Material and Color Overview.

Accessories

Flight

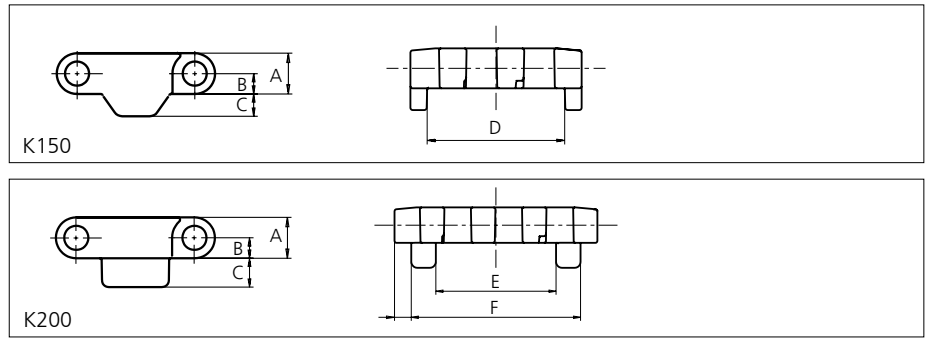
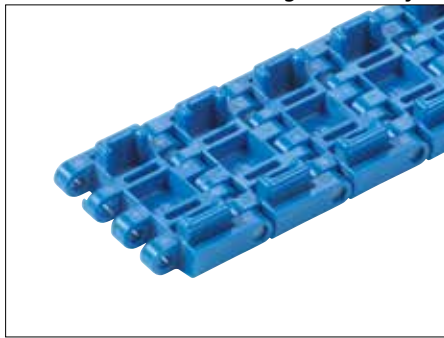


Type	Flight Material & color	H		Link size	Width		Indent	
		mm	in		mm	in	mm	in
Non Stick	PP-I B W	25.4	1.00	K600	152.0	5.98	0.0	0.00
	POM-SLF B							

Non Standard material and color: See uni Material and Color Overview.

Accessories

NON STANDARD – Tab – Single Link Only

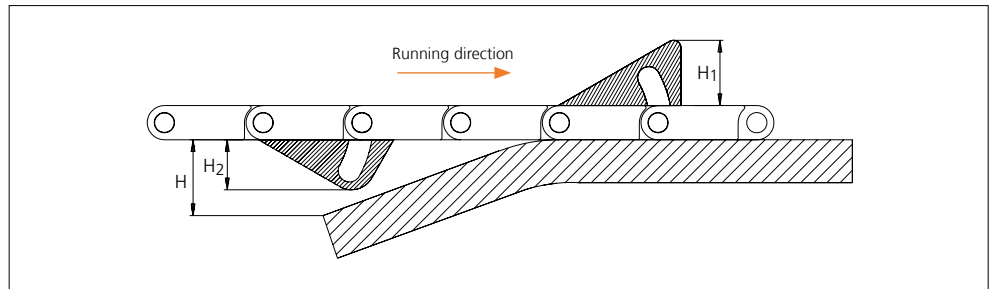
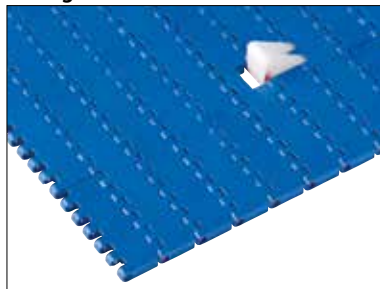


Type	Recommended link material & color	Recommended pin material & color	A		B		C		D		E		F		Link Size
			mm	in	mm	in	mm	in	mm	in	mm	in	mm	in	
Bottom Guide	POM-SLF B	PA6.6 D	8.8	0.35	4.4	0.17	4.8	0.19	30.3	1.19	29.9	1.18	42.1	1.66	K150
	PP B						6.2	0.24							K200

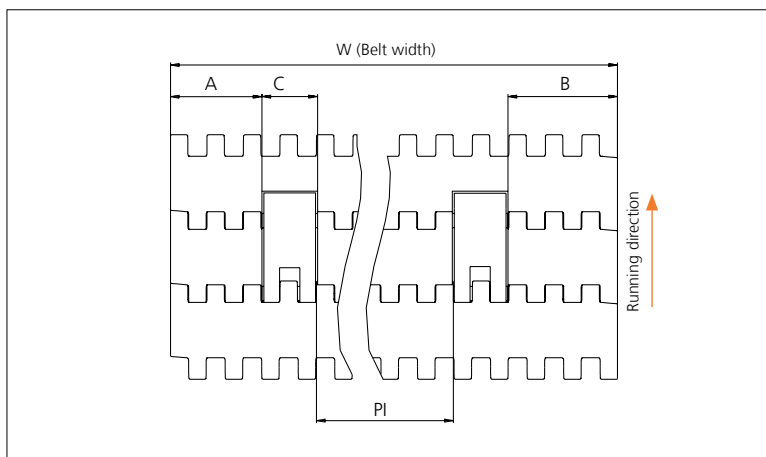
⚡ Solid Lockpin as default lock system. Alternative pin materials & color: PBT **LG**
 Non Standard material and color: See uni Material and Color Overview.

Accessories

AmFlight



Type	Material & color	H		H ¹		H ²	
		mm	in	mm	in	mm	in
Push	PE W	17.0	0.67	17.0	0.67	14.0	0.55



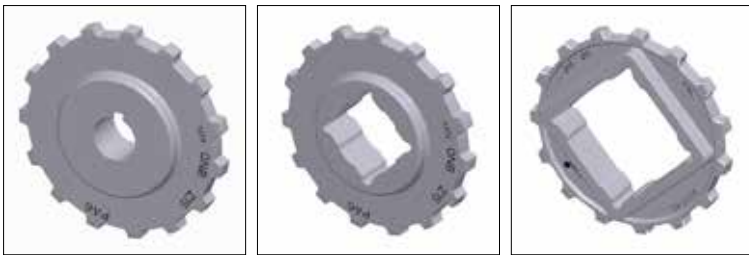
	mm	in
A min	32.4	1.28
B min	38.5	1.52
C	18.0	0.71
PI max	W - 106.9	W - 4.21
PI min	32.7	1.29

Increment: 12.7 mm (0.50 in)

Sprocket

No. of teeth	Bore size										Overall diameter		Pitch diameter		Hub diameter		Dimension A		Dimension B		Single row/Two way	Moulded	PA6 LG
	Pilot bore	in		mm		mm		mm															
			1.00	1.18	1.25	1.50	1.57	2.36	2.50	mm	in	mm	in	mm	in	mm	in	mm	in				
Z10	✓		●	●	●	■	●			80.3	3.16	82.2	3.24	65.0	2.56	34.7	1.36	45.5	1.79	✓	✓		
Z12	✓		●	●	●	■	●			96.8	3.81	98.1	3.86	70.0	2.76	43.0	1.69	53.5	2.11	✓	✓		
Z15	✓			●	●	■	●	■	1	121.5	4.78	122.2	4.81	¹ 70.0 ² 100.0 ² 104.0	2.76 13.94 4.09	55.4	2.18	65.5	2.58	✓	✓		
Z18	✓			●	●	■	●	■	2	146.0	5.75	146.3	5.76	¹ 70.0 ¹ 120.0 ² 104.0 ² 104.0	2.76 13.94 4.09 4.72	67.6	2.66	77.5	3.05	✓	✓		
Z19	✓			●	●	■	●	■	1	154.2	6.07	154.3	6.07	¹ 70.0 ¹ 120.0 ² 104.0 ² 104.0	2.76 13.94 4.09 4.72	71.7	2.82	81.6	3.21	✓	✓		

● Moulded sprocket ■ Moulded sprocket ■ Moulded sprocket

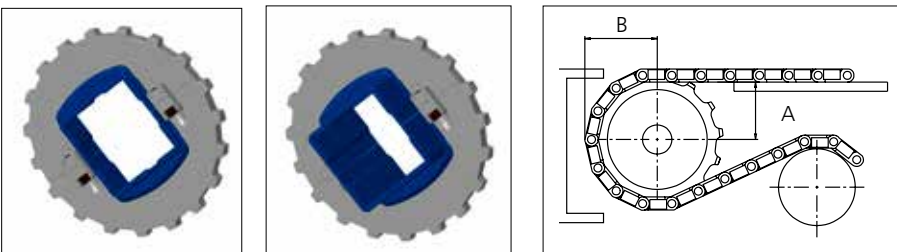


Other sprocket sizes are available upon request.
 Round bores are always delivered with keyway.
 Max load per sprocket shown does not take bore size into account.
 Please also ensure that sufficient size shaft is chosen for corresponding load.
 Other bore sizes are available upon request.
 uni Retainer Rings: See uni Retainer Ring data sheet.
 Width of tooth = 10.0 mm (0.39 in)
 Width of OnePart sprocket = 25.0 mm (0.98 in)

uni UltraFit Two-Part Sprocket

No. of teeth	Bore size					Overall diameter		Pitch diameter		Hub/adaptor diameter		Hub/adaptor width		Dimension A		Dimension B		Single row/Two way	Moulded	PA6 LG	Adaptor Moulded	POM-D B
	in	1.50	1.57	2.36	2.50																	
	mm	38.1	40.0	60.0	63.5	mm	in	mm	in	mm	in	mm	in	mm	in	mm	in					
Z12		■	■			96.8	3.81	98.2	3.87	83.0	3.27	25.0 76.0	0.98 2.99	43	1.69	53.5	2.11	✓	✓	✓	✓	
Z13		■	■			104.8	4.13	106.2	4.18	83.0	3.27	25.0 76.0	0.98 2.99	47.1	1.86	57.1	2.25	✓	✓	✓	✓	
Z15		■	■	■	■	121.5	4.78	122.5	4.82	106.0	4.14	25.0 76.0	0.98 2.99	55.4	2.18	65.5	2.58	✓	✓	✓	✓	
Z16		■	■	■	■	129.7	5.11	130.2	5.13	106.0	4.14	25.0 76.0	0.98 2.99	59.5	2.35	69.5	2.74	✓	✓	✓	✓	
Z18		■	■	■	■	146.1	5.75	146.3	5.76	106.0	4.14	25.0 76.0	0.98 2.99	67.6	2.66	77.5	3.05	✓	✓	✓	✓	
Z19		■	■	■	■	154.2	6.07	154.3	6.07	106.0	4.14	25.0 76.0	0.98 2.99	71.7	2.82	81.6	3.21	✓	✓	✓	✓	

■ Moulded uni UltraFit TwoPart Sprocket (Narrow adapter) ■ Moulded uni UltraFit TwoPart Sprocket (Wide adapter)



For correct sprocket position:
 See uni Assembly Instructions for uni QNB.
 For more detailed sprocket information contact Customer Service.



This information is subject to alteration due to continuous development. Ammeraal Beltech will not be held liable for the incorrect use of the above stated information. This information replaces previous information. All activities performed and services rendered by Ammeraal Beltech are subject to general terms and conditions of sale and delivery, as applied by its operating companies.

Expert advice, quality solutions and local service for all your belting needs
www.ammeraalbeltech.com

Ammeraal Beltech Modular A/S
 Hjulmagervej 21
 DK-7100 Vejle

T +45 7572 3100
 F +45 7572 3348
 admin@unichains.com
 www.unichains.com