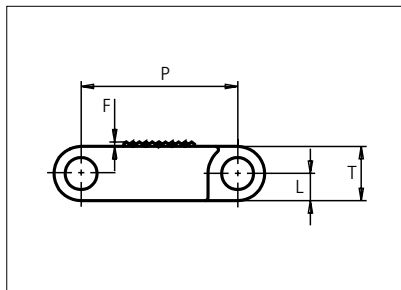




Plastic Modular Belt

Series **uni QNB** Type **Rough**



Straight running belt
 Nominal pitch: 25.4 mm (1.00 in)
 Surface type: Rough Top
 Surface opening: Closed
 Backflex radius: 40.0 mm (1.57 in)
 Pin diameter: 5.0 mm (0.31 in)

| | | | | | | | |
|----------------------------------|------------------|--------------------|-----------|-----------|----------|-----------|-----------|
| Belt material & color | POM-SLF B | | mm | in | | mm | in |
| Pin material & color | PP B | P (Nominal) | 25.4 | 1.00 | L | 4.4 | 0.17 |
| | | F | 0.8 | 0.03 | T | 8.8 | 0.35 |

Non standard material and color: See uni Material and Color Overview.

Alternative pin and lock materials: Solid Lockpin: PA6.6 **D** Pin: PP **W** PA6.6 **B** PE **W** PBT **LG** and SS304 Endlock: PA6.6 **D**
 Lockpin: PBT **LG** PA6.6 **D** **N** PP **B** **W**

| Belt width | | Permissible tensile force (Belt/pin material) | | Belt weight (Belt/pin material) | | *Min. No. drive sprocket per shaft | Number of wear strips (Min. No.) | |
|------------|------|---|------|---------------------------------|-------|------------------------------------|----------------------------------|----------------|
| | | POM-SLF/PP | | POM-SLF/PP | | | **Carry (pcs) | **Return (pcs) |
| mm | in | N | lbf | kg/m | lb/ft | | | |
| 77 | 3.0 | 2695 | 606 | 0.6 | 0.43 | 2 | 2 | 2 |
| 153 | 6.0 | 5355 | 1204 | 1.3 | 0.86 | 2 | 2 | 2 |
| 229 | 9.0 | 8015 | 1802 | 1.9 | 1.29 | 2 | 2 | 2 |
| 305 | 12.0 | 10675 | 2400 | 2.6 | 1.72 | 3 | 3 | 2 |
| 382 | 15.0 | 13370 | 3006 | 3.2 | 2.16 | 3 | 3 | 2 |
| 458 | 18.0 | 16030 | 3604 | 3.8 | 2.59 | 4 | 4 | 2 |
| 534 | 21.0 | 18690 | 4202 | 4.5 | 3.01 | 4 | 4 | 2 |
| 610 | 24.0 | 21350 | 4799 | 5.1 | 3.44 | 5 | 5 | 3 |
| 687 | 27.0 | 24045 | 5405 | 5.8 | 3.88 | 5 | 5 | 3 |
| 763 | 30.0 | 26705 | 6003 | 6.4 | 4.31 | 6 | 6 | 3 |
| 839 | 33.0 | 29365 | 6601 | 7.0 | 4.74 | 6 | 6 | 3 |
| 915 | 36.0 | 32025 | 7199 | 7.7 | 5.17 | 7 | 7 | 4 |
| 992 | 39.1 | 34720 | 7805 | 8.3 | 5.60 | 7 | 7 | 4 |

Additional standard belt widths are available in steps of 76.3 mm (3.00 in). Additional non-standard belt widths are available in steps of 25.4 mm (1.00 in).

| | | | | | | | | |
|------|------|-------|-------|------|-------|----|----|---|
| 1983 | 78.1 | 69405 | 15602 | 16.7 | 11.19 | 14 | 14 | 7 |
|------|------|-------|-------|------|-------|----|----|---|

Additional standard belt widths are available in steps of 76.3 mm (3.00 in). Additional non-standard belt widths are available in steps of 25.4 mm (1.00 in).

| | | | | | | | | |
|------|-------|--------|-------|------|-------|----|----|----|
| 2974 | 117.1 | 104090 | 23399 | 25.0 | 16.79 | 20 | 20 | 10 |
|------|-------|--------|-------|------|-------|----|----|----|

General belt tolerance is +0/-0.4% at 23°C/73°F and 50% RH. For exact belt width contact Customer Service. Non standard belt width on request.

*Max. Load per Drive Sprocket. Belt material: POM-SLF 2300 N (517 lbf), PP 1300 N (292 lbf).
 **Max. Spacing between wear strips, Carry: 152.0 mm (6.00 in); Return: 304.0 mm (12.00 in).

= Single Link



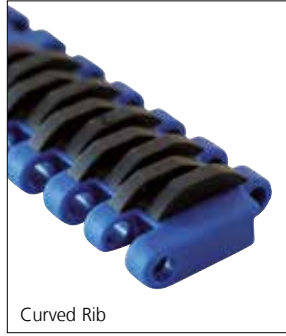
STANDARD

STRAIGHT RUNNING

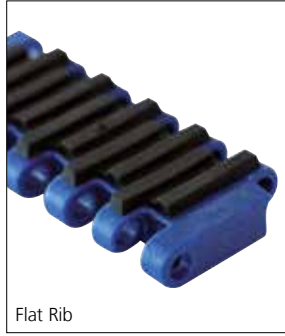
PITCH 25.4 MM/1.00 IN

Accessories

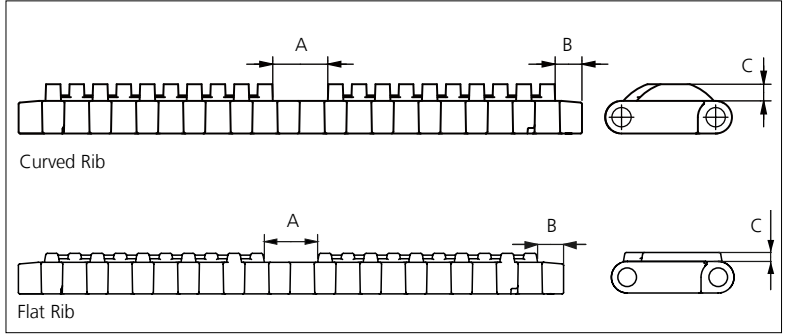
Rubber Top



Curved Rib



Flat Rib



Curved Rib

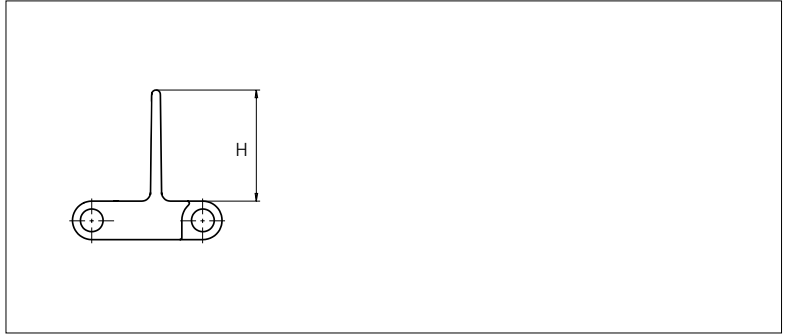
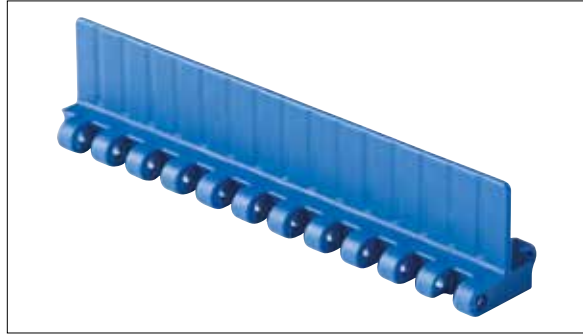
Flat Rib

| Type | Belt Material & color | Rubber Material & color | A | | B | | C | | Link size | Width | |
|------------|-----------------------|-------------------------|-------|-------|------|------|-----|------|-----------|-------|------|
| | | | mm | in | mm | in | mm | in | | mm | in |
| Curved Rib | PP B | 03 K | 14.9 | 0.59 | 7.3 | 0.29 | 4.5 | 0.18 | K300 | 75.8 | 2.98 |
| | | | K600 | 152.0 | 5.98 | | | | | | |
| Flat Rib | PP B | 03 K | 14.85 | 0.58 | 7.25 | 0.29 | 2.5 | 0.10 | K300 | 75.8 | 2.98 |
| | | | K600 | 152.0 | 5.98 | | | | | | |

Non Standard material and color: See uni Material and Color Overview.

Accessories

Flight

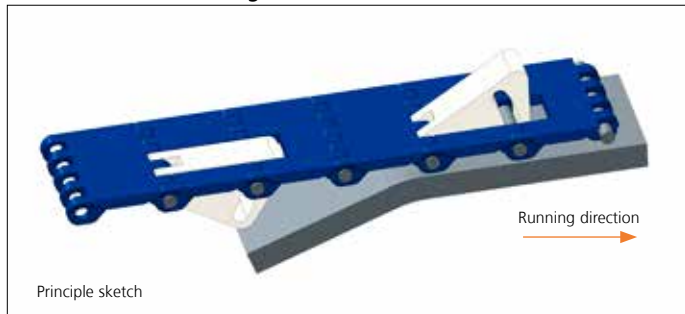


| Type | Flight Material & color | H | | Link size | Width | | Indent | |
|-----------|-------------------------|------|------|-----------|-------|------|--------|------|
| | | mm | in | | mm | in | mm | in |
| Non Stick | PP-I B W | 25.4 | 1.00 | K600 | 152.0 | 5.98 | 0.0 | 0.00 |
| | POM-SLF B | | | | | | | |

Non Standard material and color: See uni Material and Color Overview.

Accessories

Non Standard uni AmFlight

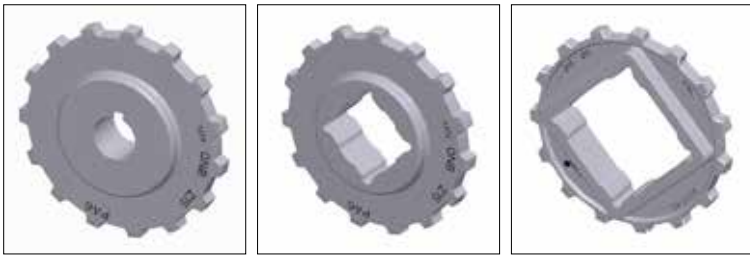


Principle sketch

Sprocket

| No. of teeth | Bore size | | | | | | | | | | Overall diameter | | Pitch diameter | | Hub diameter | | Dimension A | | Dimension B | | Single row/Two way | PAG LG | |
|--------------|------------|------|----|------|----|------|----|------|----|------|------------------|-------|----------------|-------|--------------|------------------------|----------------------|------|-------------|------|--------------------|--------|------|
| | Pilot bore | 1.00 | | 1.18 | | 1.25 | | 1.50 | | 1.57 | | | | | | | | | | | | | 2.36 |
| | mm | mm | in | mm | in | mm | in | mm | in | mm | in | mm | in | mm | in | mm | in | mm | in | mm | in | | |
| Z10 | ✓ | | ● | ● | ● | ■ | ● | | | | | 80.3 | 3.16 | 82.2 | 3.24 | 65.0 | 2.56 | 34.7 | 1.36 | 45.5 | 1.79 | ✓ | ✓ |
| Z12 | ✓ | | ● | ● | ● | ■ | ■ | | | | | 96.8 | 3.81 | 98.1 | 3.86 | 70.0 | 2.76 | 43.0 | 1.69 | 53.5 | 2.11 | ✓ | ✓ |
| Z15 | ✓ | | | ● | ● | ■ | ■ | ■ | ■ | ■ | ■ | 121.5 | 4.78 | 122.2 | 4.81 | 70.0 100.0 104.0 | 2.76 3.94 4.09 | 55.4 | 2.18 | 65.5 | 2.58 | ✓ | ✓ |
| Z18 | ✓ | | | ● | ● | ■ | ■ | ■ | ■ | ■ | ■ | 146.0 | 5.75 | 146.3 | 5.76 | 70.0 104.0 120.0 | 2.76 4.09 4.72 | 67.6 | 2.66 | 77.5 | 3.05 | ✓ | ✓ |
| Z19 | ✓ | | | ● | ● | ■ | ■ | ■ | ■ | ■ | ■ | 154.2 | 6.07 | 154.3 | 6.07 | 70.0 120.0 | 2.76 4.72 | 71.7 | 2.82 | 81.6 | 3.21 | ✓ | ✓ |

● Moulded sprocket ■ Moulded sprocket ■ Moulded sprocket

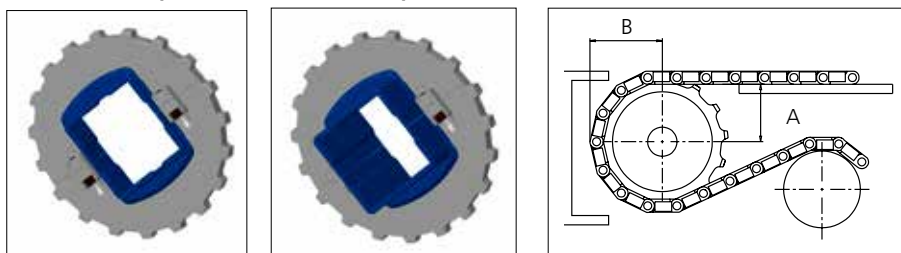


Other sprocket sizes are available upon request.
 Round bores are always delivered with keyway.
 Max load per sprocket shown does not take bore size into account.
 Please also ensure that sufficient size shaft is chosen for corresponding load.
 Other bore sizes are available upon request.
 uni Retainer Rings: See uni Retainer Ring data sheet.
 Width of tooth = 10.0 mm (0.39 in)
 Width of OnePart sprocket = 25.0 mm (0.98 in)

uni UltraFit Two-Part Sprocket

| No. of teeth | Bore size | | | | | Overall diameter | | Pitch diameter | | Hub/adaptor diameter | | Hub/adaptor width | | Dimension A | | Dimension B | | Single row/Two way | PAG LG | B |
|--------------|-----------|------|------|------|------|------------------|------|----------------|------|----------------------|------|-------------------|--------------|-------------|------|-------------|------|--------------------|--------|---|
| | in | 1.50 | 1.57 | 2.36 | 2.50 | | | | | | | | | | | | | | | |
| | mm | 38.1 | 40.0 | 60.0 | 63.5 | mm | in | mm | in | mm | in | mm | in | mm | in | mm | in | mm | in | |
| Z12 | | ■ | ■ | | | 96.8 | 3.81 | 98.2 | 3.87 | 83.0 | 3.27 | 25.0 76.0 | 0.98 2.99 | 43 | 1.69 | 53.5 | 2.11 | ✓ | ✓ | ✓ |
| Z13 | | ■ | ■ | | | 104.8 | 4.13 | 106.2 | 4.18 | 83.0 | 3.27 | 25.0 76.0 | 0.98 2.99 | 47.1 | 1.86 | 57.1 | 2.25 | ✓ | ✓ | ✓ |
| Z15 | | ■ | ■ | ■ | ■ | 121.5 | 4.78 | 122.5 | 4.82 | 106.0 | 4.14 | 25.0 76.0 | 0.98 2.99 | 55.4 | 2.18 | 65.5 | 2.58 | ✓ | ✓ | ✓ |
| Z16 | | ■ | ■ | ■ | ■ | 129.7 | 5.11 | 130.2 | 5.13 | 106.0 | 4.14 | 25.0 76.0 | 0.98 2.99 | 59.5 | 2.35 | 69.5 | 2.74 | ✓ | ✓ | ✓ |
| Z18 | | ■ | ■ | ■ | ■ | 146.1 | 5.75 | 146.3 | 5.76 | 106.0 | 4.14 | 25.0 76.0 | 0.98 2.99 | 67.6 | 2.66 | 77.5 | 3.05 | ✓ | ✓ | ✓ |
| Z19 | | ■ | ■ | ■ | ■ | 154.2 | 6.07 | 154.3 | 6.07 | 106.0 | 4.14 | 25.0 76.0 | 0.98 2.99 | 71.7 | 2.82 | 81.6 | 3.21 | ✓ | ✓ | ✓ |

■ Moulded uni UltraFit TwoPart Sprocket (Narrow adapter) ■ Moulded uni UltraFit TwoPart Sprocket (Wide adapter)



For correct sprocket position:
 See uni Assembly Instructions for uni QNB.
 For more detailed sprocket information contact Customer Service.



Conveyor Belts



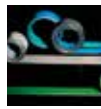
Seamless Belts



Modular Belts



Timing Belts



Transmission Belts



Fabrication & service

Expert advice, quality solutions
and local service
for all your belting needs
www.ammeraalbeltech.com

Ammeraal Beltech Modular A/S
Hjulgagervej 21
DK-7100 Vejle

T +45 7572 3100
F +45 7572 3348
admin@unichains.com
www.unichains.com

This information is subject to alteration due to continuous development. Ammeraal Beltech will not be held liable for the incorrect use of the above stated information. This information replaces previous information. All activities performed and services rendered by Ammeraal Beltech are subject to general terms and conditions of sale and delivery, as applied by its operating companies.