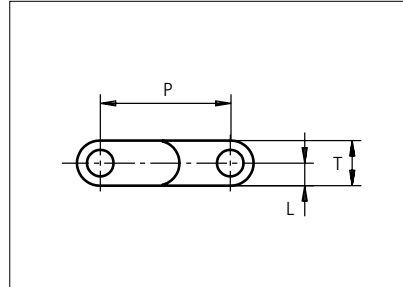
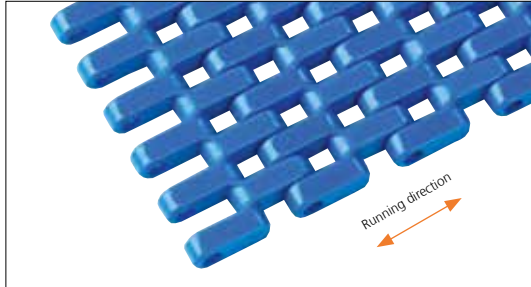




# Plastic Modular Belt

Series **uni SNB** Type **M2 20%**



Straight running belt  
 Nominal pitch: 25.4 mm (1.00 in)  
 Surface type: Flat  
 Surface opening: 20%  
 Backflex radius: 30.0 mm (1.20 in)  
 Pin diameter: 5.0 mm (0.20 in)

STANDARD

Belt material & color	POM-D <b>B</b>	PP <b>B</b>	PP <b>W</b>	PE <b>N</b>	PE <b>B</b>	mm	in	L	mm	in		
											<b>P (Nominal)</b>	25.4
Pin material & color	PP <b>B</b>		PP <b>W</b>		PE <b>N</b>		<b>T</b>	8.8	0.35	-	-	-

Non standard material and color: See uni Material and Color Overview.

Alternative pin and lock materials: Lockpin: PBT **LG** PA6.6 **D** **N** PP **B** **W** PE **N**

STRAIGHT RUNNING

Belt width		Permissible tensile force (Belt/pin material)						Belt weight (Belt/pin material)						*Min. No. drive sprocket per shaft	Number of wear strips (Min. No.)	
		POM-D/PA6.6		PP/PA6.6		PE/PA6.6		POM-D/PA6.6		PP/PA6.6		PE/PA6.6			**Carry (pcs)	**Return (pcs)
mm	in	N	lbf	N	lbf	N	lbf	kg/m	lb/ft	kg/m	lb/ft	kg/m	lb/ft			
77	3.0	1810	407	1155	260	770	173	0.5	0.33	0.3	0.22	0.3	0.23	2	2	2
153	6.0	3596	808	2295	516	1530	344	1.0	0.65	0.7	0.44	0.7	0.45	2	2	2
191	7.5	4489	1009	2865	644	1910	429	1.2	0.81	0.8	0.55	0.8	0.56	2	2	2
229	9.0	5382	1210	3435	772	2290	515	1.4	0.97	1.0	0.66	1.0	0.68	2	2	2
305	12.0	7168	1611	4575	1028	3050	686	1.9	1.29	1.3	0.88	1.3	0.90	3	3	2
381	15.0	8954	2013	5715	1285	3810	856	2.4	1.61	1.6	1.10	1.7	1.13	3	3	2
457	18.0	10740	2414	6855	1541	4570	1027	2.9	1.93	2.0	1.32	2.0	1.35	4	4	2
533	21.0	12526	2816	7995	1797	5330	1198	3.4	2.26	2.3	1.54	2.3	1.58	4	4	2
609	24.0	14312	3217	9135	2054	6090	1369	3.8	2.58	2.6	1.76	2.7	1.80	5	5	3
685	27.0	16098	3619	10275	2310	6850	1540	4.3	2.90	2.9	1.98	3.0	2.03	5	5	3
761	30.0	17884	4020	11415	2566	7610	1711	4.8	3.22	3.3	2.20	3.3	2.25	6	6	3
837	33.0	19670	4422	12555	2822	8370	1882	5.3	3.54	3.6	2.42	3.7	2.48	6	6	3
913	35.9	21456	4823	13695	3079	9130	2052	5.8	3.87	3.9	2.64	4.0	2.70	7	7	4

Additional standard belt widths are available in steps of 76.1 mm (3.00 in). Additional non-standard belt widths are available in steps of 12.7 mm (0.50 in).

1978	77.9	46483	10449	29670	6670	19780	4447	12.5	8.37	8.5	5.72	8.7	5.85	14	14	7
------	------	-------	-------	-------	------	-------	------	------	------	-----	------	-----	------	----	----	---

Additional standard belt widths are available in steps of 76.1 mm (3.00 in). Additional non-standard belt widths are available in steps of 12.7 mm (0.50 in).

2967	116.8	69725	15674	44505	10005	29670	6670	18.7	12.56	12.8	8.57	13.1	8.77	20	20	10
------	-------	-------	-------	-------	-------	-------	------	------	-------	------	------	------	------	----	----	----

General belt tolerance is +0/-0.4% at 23°C/73°F and 50% RH. For exact belt width contact Customer Service. Non standard belt width on request.

\*Max. Load per Drive Sprocket. Belt material: POM-D 1400 N (315 lbf), PP 1100 N (247 lbf), PE 1100 N (247 lbf).

\*\*Max. Spacing between wear strips, Carry: 152.0 mm (6.00 in); Return: 304.0 mm (12.00 in).

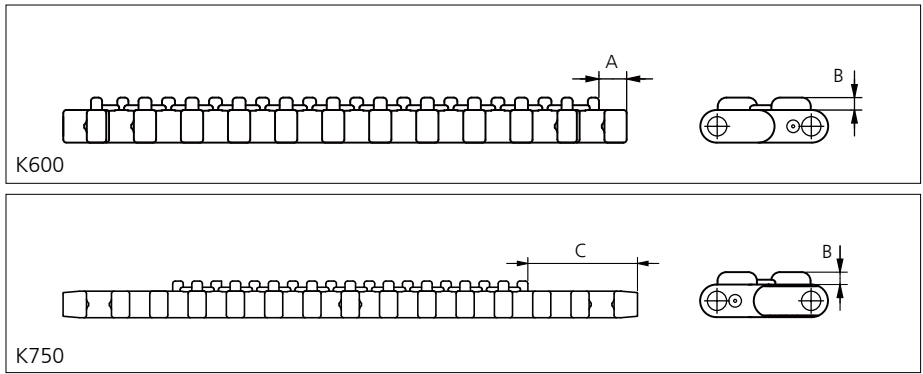
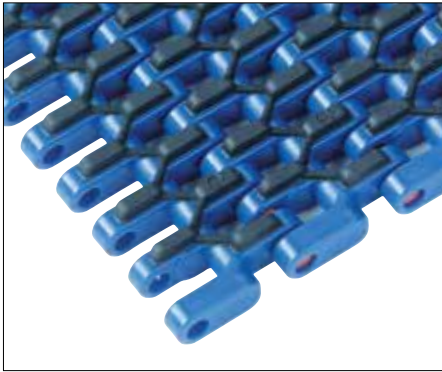
= Single Link

PITCH 25.4 MM/1.00 IN



## Accessories

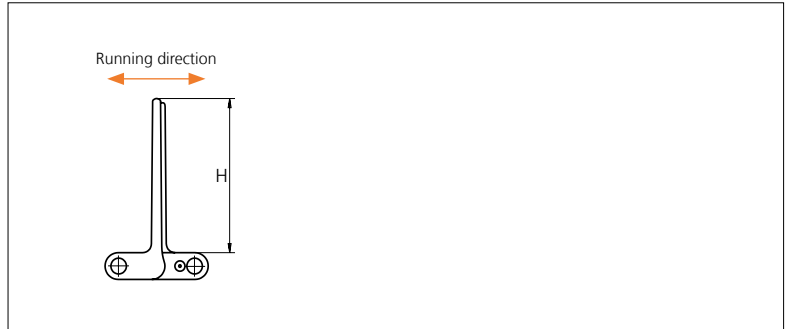
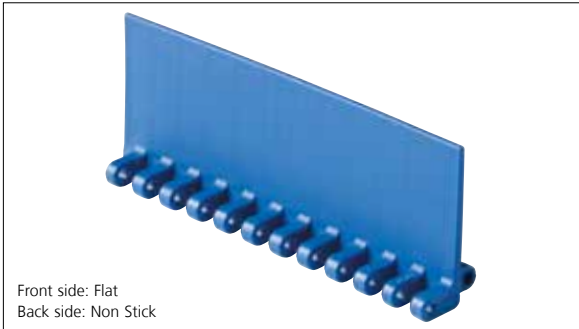
### Rubber Top



Type	Belt material & color	Rubber material & color	A		B		C		Link size	Width	
			mm	in	mm	in	mm	in		mm	in
M2 20% Flat	PP <b>B</b>	03 <b>K</b>	7.5	0.30	3.4	0.13	36.0	1.41	K300	77.0	3.00
									K600	152.4	6.00
	PP <b>W</b>	03 <b>N</b>							K750	190.5	7.50

## Accessories

### Flight

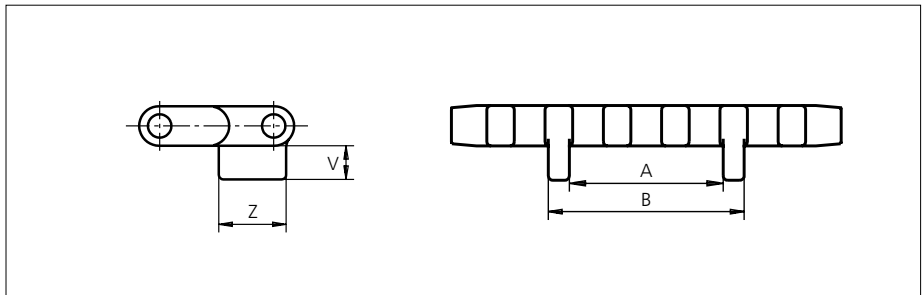
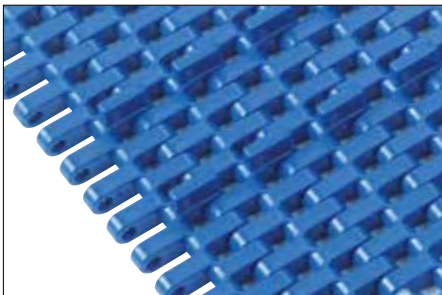


Type	Flight Material & color		H		Link size	Width	
			mm	in		mm	in
M2 20% Flat/Non Stick	PP-I <b>W</b> <b>B</b>	PE <b>N</b> <b>B</b>	5.0	0.20	K600	151.1	5.99
			25.4	1.00			
		PE-I <b>N</b> <b>B</b>	50.8	2.00			
			76.2	3.00			
			101.6	4.00			

Flights on 25.4 mm (1.00 in) are cut down from 50.8 mm (2.00 in).

## Accessories

### Tab / Single Link Only

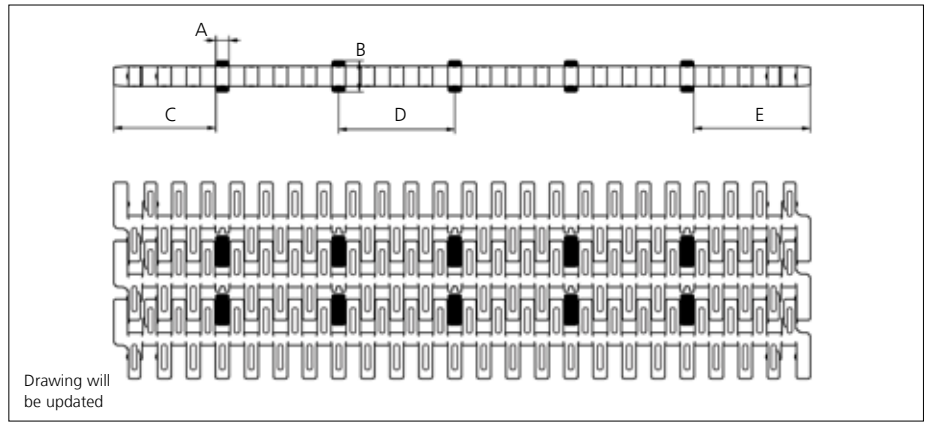
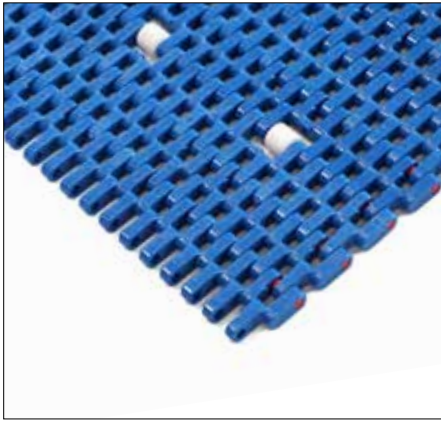


Type	Tab Material & color	V		Z		A		B		Link size	Width	
		mm	in	mm	in	mm	in	mm	in		mm	in
M2 20% Bottom Guide	PP <b>B</b>	7.50	0.29	15.0	0.59	33.5	1.19	42.7	1.68	K750	189.4	7.46

Non Standard material and color: See uni Material and Color Overview.

## Accessories

### Rollers NON STANDARD

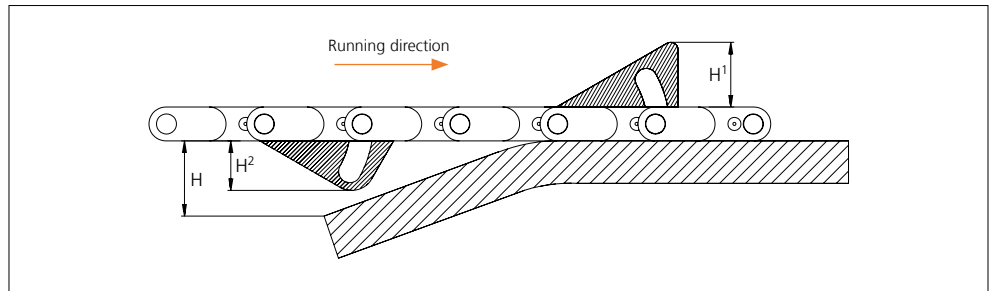


Type	Roller material & color	A		B		C		D		E	
		mm	in	mm	in	mm	in	mm	in	mm	in
Plastic	POM-D <b>W</b>	5.7	0.22	13.5	0.53	44.6	1.75	50.8	2.00	51.0	2.01

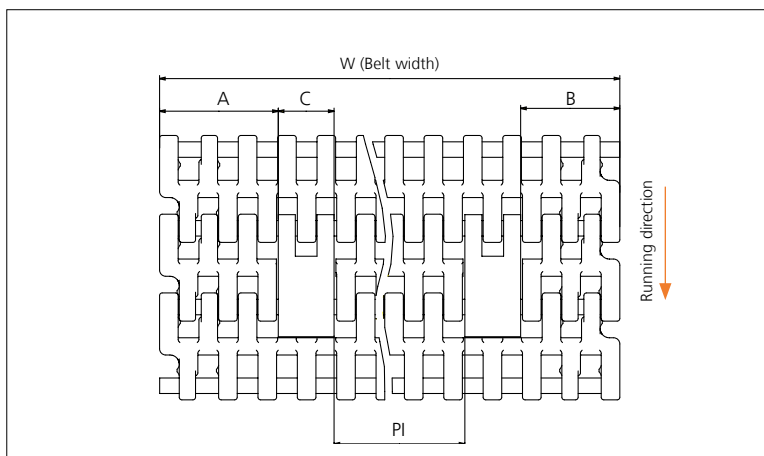
Non Standard material and color: See uni Material and Color Overview.

## Accessories

### AmFlight



Type	Material & color	H		H <sup>1</sup>		H <sup>2</sup>	
		mm	in	mm	in	mm	in
Push	PE <b>W</b>	17.0	0.67	17.0	0.67	14.4	0.57



	mm	in
<b>A min</b>	38.3	1.51
<b>B min</b>	32.1	1.26
<b>C</b>	18.0	0.71
<b>PI max</b>	W - 106.4	W - 4.19
<b>PI min</b>	33.2	1.31

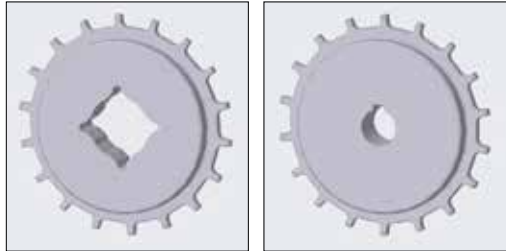
Increment: 12.7 mm (0.50 in).

## Sprocket

No. of teeth	Pilot Bore	Bore size							Overall diameter		Pitch diameter		Hub diameter		Dimension A		Dimension B		Single row/Two way	Molded	PA6 LG
		in	1.00	1.18	1.25	1.50	1.57	2.36													
		mm	25.4	30.0	31.8	38.1	40.0	60.0	63.5	mm	in	mm	in	mm	in	mm	in				
Z10	✓	●	●	●	■	●			86.0	3.39	82.2	3.24	65.0	2.56	34.7	1.37	45.5	1.79	✓	✓	
Z12	✓	●	●	●	■	●			103.2	4.06	98.1	3.86	65.0	2.56	43.0	1.69	53.5	2.11	✓	✓	
Z18	✓		●	●	■	●			151.9	5.98	146.3	5.76	65.0	2.56	67.6	2.66	77.6	3.06	✓	✓	
Z18	✓						●	●	151.9	5.98	146.3	5.76	120.0	4.72	67.6	2.66	77.6	3.06	✓	✓	
Z19	✓		●	●	■	●			160.0	6.30	154.3	6.07	65.0	2.56	71.7	2.82	81.6	3.21	✓	✓	
Z19	✓						●	●	160.0	6.30	154.3	6.07	120.0	4.72	71.7	2.82	81.6	3.21	✓	✓	
Z20	✓		●	●	■	●			168.2	6.62	162.4	6.39	65.0	2.56	75.8	2.98	85.6	3.37	✓	✓	
Z20	✓						●	●	168.2	6.62	162.4	6.39	120.0	4.72	75.8	2.98	85.6	3.37	✓	✓	

■ Molded sprocket

● Molded sprocket



Other sprocket sizes are available upon request.

Other bore sizes on sprockets are available upon request.

Max. load per sprocket shown does not take bore size into account.

Please also ensure that sufficient size shaft is chosen for corresponding load.

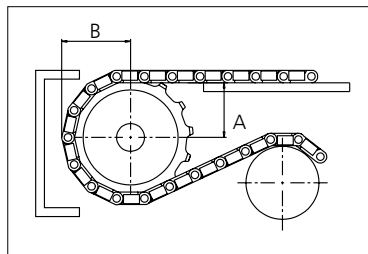
Width of tooth = Single row: 6.0 mm (0.24 in)

Width of One-part sprocket = Single row: 25.0 mm (0.98 in)

## uni UltraClean Two-Part Sprocket

No. of teeth	Bore size					Overall diameter		Pitch diameter		Hub diameter		Dimension A		Dimension B		Single row/Two way	Moulded	PA6 W
	in	1.50	1.57	2.36	2.50													
	mm	38.1	40.0	60.0	63.5	mm	in	mm	in	mm	in	mm	in					
Z12	■	■				103.2	4.06	98.1	3.86	80.0	3.15	43	1.69	53.5	2.11	✓	✓	
Z15	■	■				127.5	5.02	122.2	4.81	80.0	3.15	55.4	2.18	65.5	2.58	✓	✓	
Z19	1 ■	1 ■	2 ■	2 ■		160.0	6.30	154.3	6.07	<sup>1</sup> 118.0 <sup>2</sup> 126.0	<sup>1</sup> 4.65 <sup>2</sup> 4.96	71.7	2.82	81.6	3.21	✓	✓	
Z20		■				168.2	6.62	162.4	6.39	118	118.0	75.8	2.98	85.6	3.37	✓	✓	

■ Moulded uni UltraClean TwoPart Sprocket



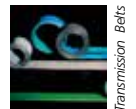
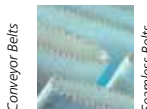
Width of UltraClean Two-part sprocket = Single row: 44.0 mm (1.73 in)

Width of UltraClean Two-part sprocket, tooth = Single row: 6.0 mm (0.24 in)

uni Retainer Rings: See uni Retainer Ring data sheet.

For correct sprocket position: See uni Assembly Instructions for uni SNB M2.

For more detailed sprocket information. contact Customer Service.



Expert advice, quality solutions and local service for all your belting needs  
[www.ammeraalbeltech.com](http://www.ammeraalbeltech.com)

**Ammeraal Beltech Modular A/S**  
Hjulmagervej 21  
DK-7100 Vejle

T +45 7572 3100  
F +45 7572 3348  
admin@unichains.com  
www.unichains.com

This information is subject to alteration due to continuous development. Ammeraal Beltech will not be held liable for the incorrect use of the above stated information. This information replaces previous information. All activities performed and services rendered by Ammeraal Beltech are subject to general terms and conditions of sale and delivery, as applied by its operating companies.