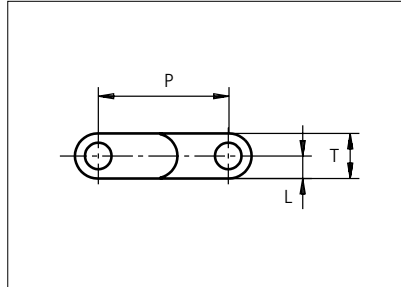
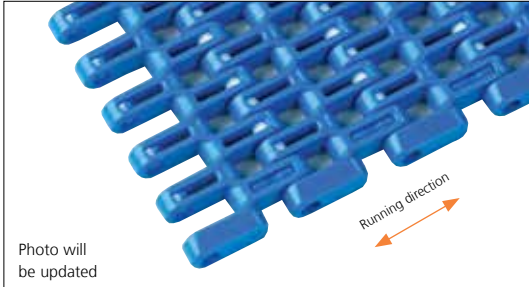




Plastic Modular Belt

Series **uni SNB** Type **M2 34%**



Straight running belt
 Nominal pitch: 25.4 mm (1.00 in)
 Surface type: Flat
 Surface opening: 34%
 Backflex radius: 30.0 mm (1.20 in)
 Pin diameter: 5.0 mm (0.20 in)

*P (Nominal)

Belt material & color	POM-D	PP	PP	PP	PE	PE	mm	in	mm	in			
	B	B	G	W	N	B							
Pin material & color	PP B		PP W			PE N		P (Nominal)	25.4	1.00	L	4.4	0.17
	PP B		PP W			PE N		T	8.8	0.35	-	-	-

Non standard material and color: See uni Material and Color Overview.

Alternative pin and lock materials: Pin: PP W PE W PA6.6 B PBT LG SS304 Lockpin: PBT LG PA6.6 D N PP B W PE N
 Endlock: PP-I B G W

Belt width		Permissible tensile force (Belt/pin material)						Belt weight (Belt/pin material)						*Min. No. drive sprocket per shaft	Number of wear strips (Min. No.)	
		POM-D/PP		PP/PP		PE/PE		POM-D/PP		PP/PP		PE/PE			**Carry (pcs)	**Return (pcs)
mm	in	N	lbf	N	lbf	N	lbf	kg/m	lb/ft	kg/m	lb/ft	kg/m	lb/ft			
45	1.8	1034	232	660	148	440	99	0.3	0.19	0.2	0.13	0.2	0.13	2	1	1
77	3.0	1810	407	1155	260	770	173	0.5	0.33	0.3	0.22	0.3	0.23	2	2	2
153	6.0	3596	808	2295	516	1530	344	1.0	0.65	0.7	0.44	0.7	0.45	2	2	2
229	9.0	5382	1210	3435	772	2290	515	1.4	0.97	1.0	0.66	1.0	0.68	2	2	2
305	12.0	7168	1611	4575	1028	3050	686	1.9	1.29	1.3	0.88	1.3	0.90	3	3	2
381	15.0	8954	2013	5715	1285	3810	856	2.4	1.61	1.6	1.10	1.7	1.13	3	3	2
457	18.0	10740	2414	6855	1541	4570	1027	2.9	1.93	2.0	1.32	2.0	1.35	4	4	2
533	21.0	12526	2816	7995	1797	5330	1198	3.4	2.26	2.3	1.54	2.3	1.58	4	4	2
609	24.0	14312	3217	9135	2054	6090	1369	3.8	2.58	2.6	1.76	2.7	1.80	5	5	3
686	27.0	16121	3624	10290	2313	6860	1542	4.3	2.90	2.9	1.98	3.0	2.03	5	5	3
762	30.0	17907	4025	11430	2569	7620	1713	4.8	3.23	3.3	2.20	3.4	2.25	6	6	3
838	33.0	19693	4427	12570	2826	8380	1884	5.3	3.55	3.6	2.42	3.7	2.48	6	6	3
914	36.0	21479	4828	13710	3082	9140	2055	5.8	3.87	3.9	2.64	4.0	2.70	7	7	4

Additional standard belt widths are available in steps of 76.1 mm (3.00 in). Additional non-standard belt widths are available in steps of 12.7 mm (0.50 in).

1979	77.9	46507	10455	29685	6673	19790	4449	12.5	8.38	8.5	5.72	8.7	5.85	14	14	7
------	------	-------	-------	-------	------	-------	------	------	------	-----	------	-----	------	----	----	---

Additional standard belt widths are available in steps of 76.1 mm (3.00 in). Additional non-standard belt widths are available in steps of 12.7 mm (0.50 in).

2969	116.9	69772	15685	44535	10011	29690	6674	18.7	12.57	12.8	8.58	13.1	8.78	20	20	10
------	-------	-------	-------	-------	-------	-------	------	------	-------	------	------	------	------	----	----	----

General belt tolerance is +0/-0.4% at 23°C/73°F and 50% RH. For exact belt width contact Customer Service. Non standard belt width on request.

*Max. Load per Drive Sprocket. Belt material: POM-D 1400 N (315 lbf). PP 1100 N (247 lbf). PE 1100 N (247 lbf).

**Max. Spacing between wear strips. Carry: 152.0 mm (6.00 in); Return: 304.0 mm (12.00 in).

= Single Link



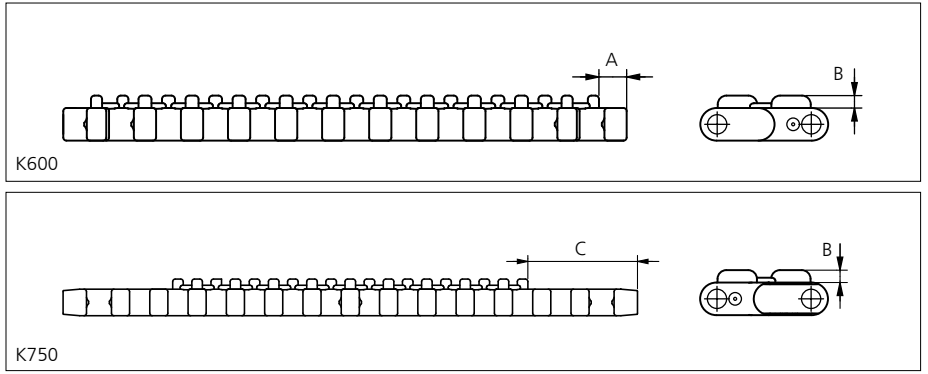
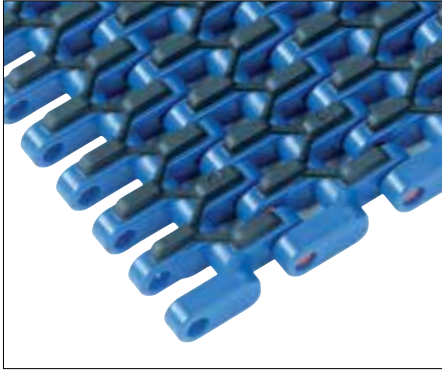
STANDARD

STRAIGHT RUNNING

PITCH 25.4 MM/1.00 IN

Accessories

Rubber Top

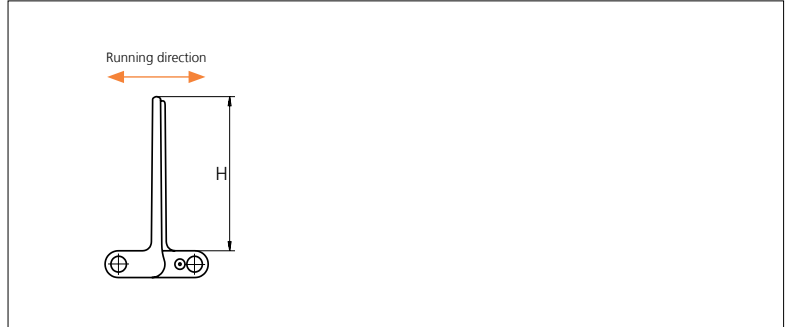
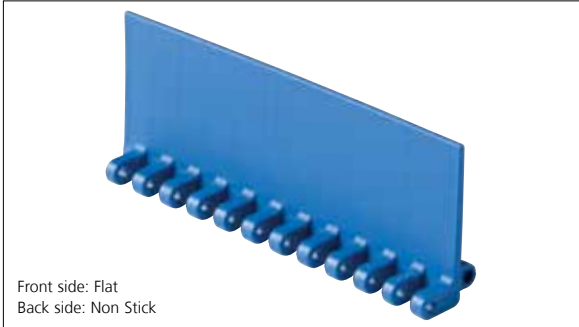


Type	Belt material & color	Rubber material & color	A		B		C		Link size	Width	
			mm	in	mm	in	mm	in		mm	in
M2 20% Flat	PP B	03 K	7.5	0.30	3.4	0.13	36.0	1.41	K300	77.0	3.00
	PP W	03 N							K600	152.4	6.00
									K750	190.5	7.50

Non Standard material and color: See uni Material and Color Overview.

Accessories

Flight

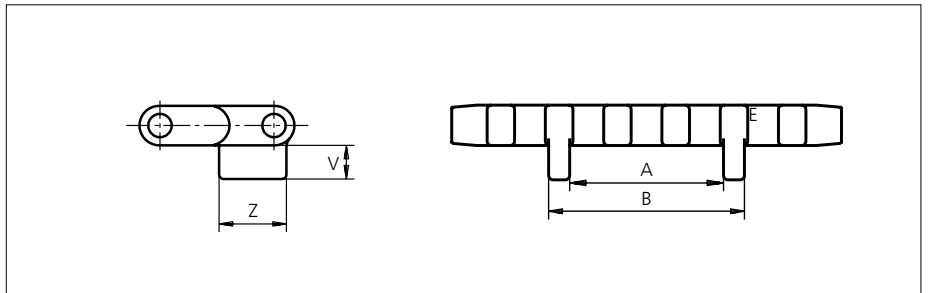


Type	Flight Material & color		H		Link size	Width	
			mm	in		mm	in
M2 20% Flat/Non Stick	PP-I W B	PE N B	5.0	0.20	K600	151.1	5.99
			25.4	1.00			
		PE-I N B	50.8	2.00			
			76.2	3.00			
			101.6	4.00			

Flights on 25.4 mm (1.00 in) are cut down from 50.8 mm (2.00 in).

Accessories

Tab / Single Link Only

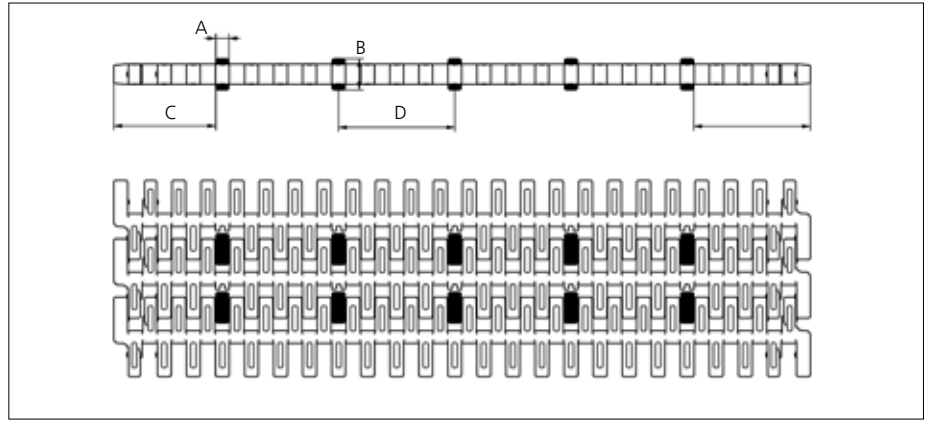
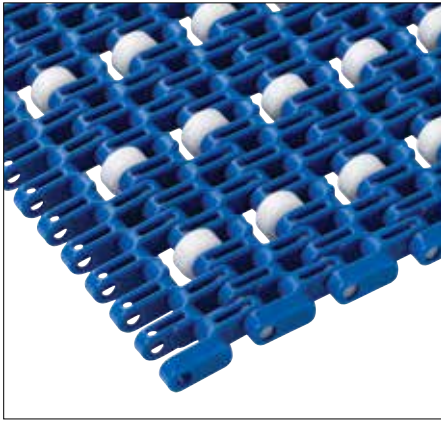


Type	Tab Material & color	V		Z		A		B		Link size	Width	
		mm	in	mm	in	mm	in	mm	in		mm	in
M2 34% Bottom Guide	POM-D B	7.50	0.29	15.0	0.59	33.5	1.19	42.7	1.68	K325	82.3	3.24
										K335	85.0	3.35
	PP B									K450	114.3	4.50
										K600	152.1	5.99
										K750	189.4	7.46

Non Standard material and color: See uni Material and Color Overview.

Accessories

Rollers NON STANDARD

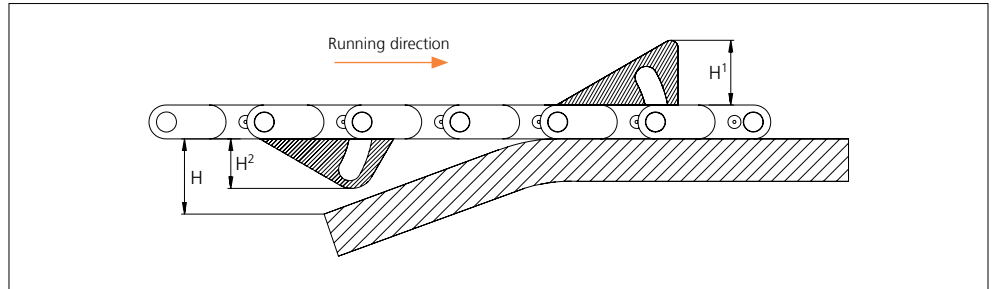
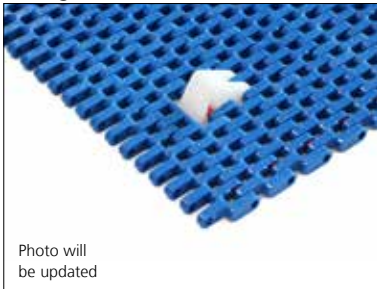


Type	Roller material & color	A		B		C		D		E	
		mm	in	mm	in	mm	in	mm	in	mm	in
Plastic	POM-D W	5.7	0.22	13.5	0.53	44.6	1.75	50.8	2.00	51.0	2.01

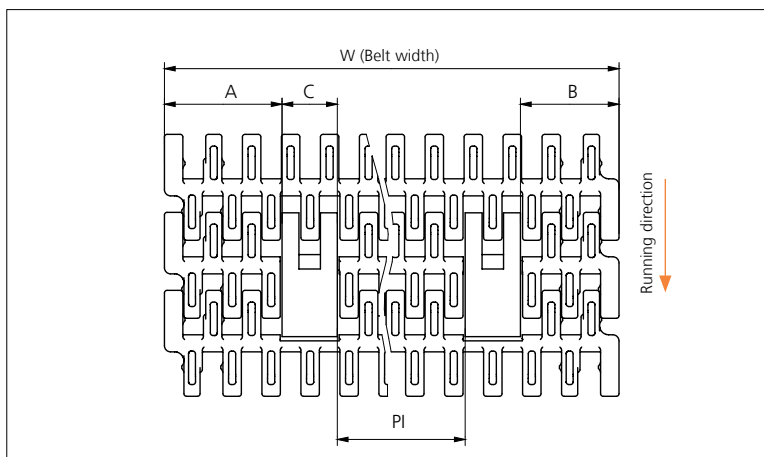
Non Standard material and color: See uni Material and Color Overview.

Accessories

AmFlight



Type	Material & color	H		H ¹		H ²	
		mm	in	mm	in	mm	in
Push	PE W	17.0	0.67	17.0	0.67	14.4	0.57



	mm	in
A min	38.3	1.51
B min	32.1	1.26
C	18.0	0.71
PI max	W - 106.4	W - 4.19
PI min	33.2	1.31

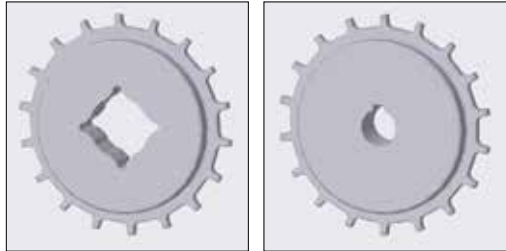
Increment: 12.7 mm (0.50 in).

Sprocket

No. of teeth	Bore size								Overall diameter		Pitch diameter		Hub diameter		Dimension A		Dimension B		Single row/Two way	Molded	PA6 LG
	Pilot Bore	in	1.00	1.18	1.25	1.50	1.57	2.36													
	mm	25.4	30.0	31.8	38.1	40.0	60.0	63.5	mm	in	mm	in	mm	in	mm	in					
Z10	✓	●	●	●	■	●			86.0	3.39	82.2	3.24	65.0	2.56	34.7	1.37	45.5	1.79	✓	✓	
Z12	✓	●	●	●	■	■			103.2	4.06	98.1	3.86	65.0	2.56	43.0	1.69	53.5	2.11	✓	✓	
Z18	✓		●	●	■	■			151.9	5.98	146.3	5.76	65.0	2.56	67.6	2.66	77.6	3.06	✓	✓	
Z18	✓						●	●	151.9	5.98	146.3	5.76	120.0	4.72	67.6	2.66	77.6	3.06	✓	✓	
Z19	✓		●	●	■	■			160.0	6.30	154.3	6.07	65.0	2.56	71.7	2.82	81.6	3.21	✓	✓	
Z19	✓						●	●	160.0	6.30	154.3	6.07	120.0	4.72	71.7	2.82	81.6	3.21	✓	✓	
Z20	✓		●	●	■	■			168.2	6.62	162.4	6.39	65.0	2.56	75.8	2.98	85.6	3.37	✓	✓	
Z20	✓						●	●	168.2	6.62	162.4	6.39	120.0	4.72	75.8	2.98	85.6	3.37	✓	✓	

■ Molded sprocket

● Molded sprocket



Other sprocket sizes are available upon request.

Other bore sizes on sprockets are available upon request.

Max. load per sprocket shown does not take bore size into account.

Please also ensure that sufficient size shaft is chosen for corresponding load.

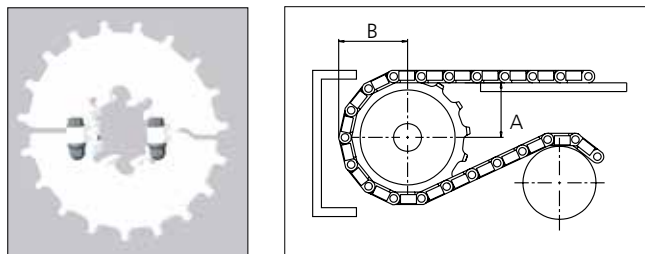
Width of tooth = Single row: 6.0 mm (0.24 in)

Width of One-part sprocket = Single row: 25.0 mm (0.98 in)

uni UltraClean Two-Part Sprocket

No. of teeth	Bore size					Overall diameter		Pitch diameter		Hub diameter		Dimension A		Dimension B		Single row/Two way	Moulded	PA6 W
	in	1.50	1.57	2.36	2.50													
	mm	38.1	40.0	60.0	63.5	mm	in	mm	in	mm	in	mm	in					
Z12		■	■			103.2	4.06	98.1	3.86	80.0	3.15	43	1.69	53.5	2.11	✓	✓	
Z15		■	■			127.5	5.02	122.2	4.81	80.0	3.15	55.4	2.18	65.5	2.58	✓	✓	
Z19		1 ■	1 ■	2 ■	2 ■	160.0	6.30	154.3	6.07	¹ 118.0 ² 126.0	¹ 4.65 ² 4.96	71.7	2.82	81.6	3.21	✓	✓	
Z20			■			168.2	6.62	162.4	6.39	118	118.0	75.8	2.98	85.6	3.37	✓	✓	

■ Moulded uni UltraClean TwoPart Sprocket



Width of UltraClean Two-part sprocket = Single row: 44.0 mm (1.73 in)

Width of UltraClean Two-part sprocket, tooth = Single row: 6.0 mm (0.24 in)

uni Retainer Rings: See uni Retainer Ring data sheet.

For correct sprocket position: See uni Assembly Instructions for uni SNB M2.

For more detailed sprocket information. contact Customer Service.



Conveyor Belts



Seamless Belts



Modular Belts



Timing Belts



Transmission Belts



Fabrication & service

Expert advice, quality solutions and local service for all your belting needs
www.ammeraalbeltech.com

Ammeraal Beltech Modular A/S
Hjulmagervej 21
DK-7100 Vejle

T +45 7572 3100
F +45 7572 3348
admin@unichains.com
www.unichains.com

This information is subject to alteration due to continuous development. Ammeraal Beltech will not be held liable for the incorrect use of the above stated information. This information replaces previous information. All activities performed and services rendered by Ammeraal Beltech are subject to general terms and conditions of sale and delivery, as applied by its operating companies.