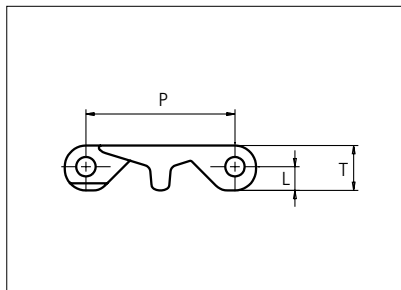




Plastic Modular Belt

Series **uni X-MPB** Type **C**



Straight running belt
 Nominal pitch: 63.5 mm (2.50 in)
 Surface type: Flat
 Surface opening: Closed
 Backflex radius: 75.0 mm (2.95 in)
 Pin diameter: 8.0 mm (0.31 in)

Belt material & color	POM-DI W	PE-I N	mm	in	mm	in
	Pin and lock material & color		P (Nominal)	63.5	2.50	T
		PA6.6 N	L	10.1	0.40	- / - / -

Non standard material and color: See uni Material and Color Overview.

Alternative pin and lock materials: Lockpin: PP **W** PBT **LG**

Belt width		Permissible tensile force (Belt/pin material)				Belt weight (Belt/pin material)				*Min. No. drive sprocket per shaft	Number of wear strips (Min. No.)	
		POM-DI/PA6.6		PE-I/PA6.6		POM-DI/PA6.6		PE-I/PA6.6			**Carry (pcs)	**Return (pcs)
mm	in	N	lbf	N	lbf	kg/m	lb/ft	kg/m	lb/ft			
76	3.0	2280	513	760	171	1.1	0.75	0.8	0.51	2	2	2
152	6.0	4558	1025	1519	342	2.2	1.49	1.5	1.02	2	2	2
227	9.0	6822	1534	2274	511	3.3	2.23	2.3	1.53	2	2	2
303	11.9	9087	2043	3029	681	4.4	2.97	3.0	2.04	3	3	2
378	14.9	11352	2552	3784	851	5.5	3.71	3.8	2.54	3	3	2
454	17.9	13616	3061	4539	1020	6.6	4.45	4.5	3.05	4	4	2
529	20.8	15881	3570	5294	1190	7.7	5.19	5.3	3.56	4	4	2
605	23.8	18146	4079	6049	1360	8.8	5.93	6.0	4.06	5	5	3
680	26.8	20410	4588	6803	1529	9.9	6.68	6.8	4.57	5	5	3
756	29.8	22675	5097	7558	1699	11.0	7.42	7.6	5.08	6	6	3
831	32.7	24940	5606	8313	1869	12.1	8.16	8.3	5.59	6	6	3
907	35.7	27204	6116	9068	2039	13.2	8.90	9.1	6.09	7	7	4
982	38.7	29469	6625	9823	2208	14.3	9.64	9.8	6.60	7	7	4

Additional standard belt widths are available in steps of 75.5 mm (2.97 in). Additional non-standard belt widths are available in steps of 25.2 mm (0.99 in).

1963	77.3	58890	13238	19630	4413	28.7	19.26	19.6	13.19	14	14	7
------	------	-------	-------	-------	------	------	-------	------	-------	----	----	---

Additional standard belt widths are available in steps of 75.5 mm (2.97 in). Additional non-standard belt widths are available in steps of 25.2 mm (0.99 in).

2945	115.9	88350	19861	29450	6620	43.0	28.90	29.5	19.79	20	20	10
------	-------	-------	-------	-------	------	------	-------	------	-------	----	----	----

General belt tolerance is +0/-0.4% at 23°C/73°F and 50% RH. For exact belt width contact Customer Service. Non standard belt width on request.

*Max. Load per Drive Sprocket. Belt material: POM-DI 4000 N (899 lbf), PE-I 3000 N (674 lbf).

**Max. Spacing between wear strips, Carry: 152.0 mm (6.00 in); Return: 304.0 mm (12.00 in).

= Single Link



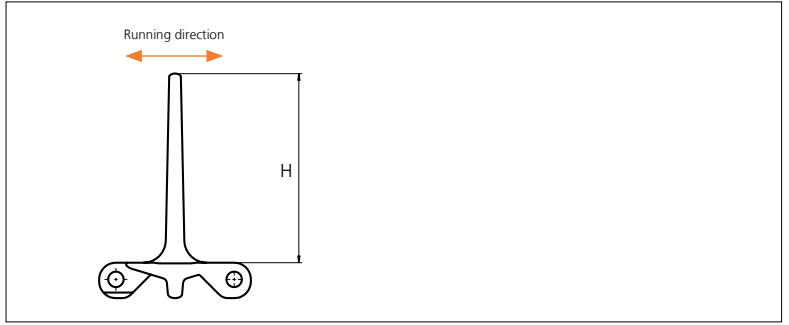
STANDARD

STRAIGHT RUNNING

PITCH 63.5 MM/2.50 IN

Accessories

Flight



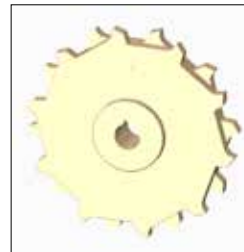
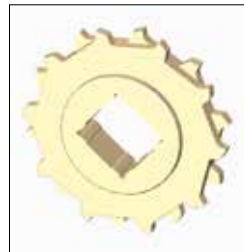
Type	Material & color	H		Link size	Width		Indent	
		mm	in		mm	in	mm	in
Flat	POM-DI W	101.6	4.00	K600	151.0	5.94	0.0	0.00

Non Standard material and color: See uni Material and Color Overview.

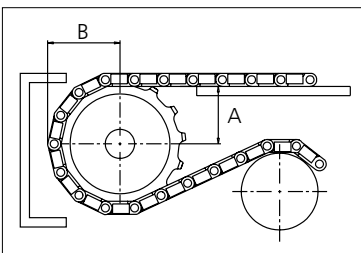
Sprocket

No. of teeth	Bore size						Overall diameter		Pitch diameter		Hub diameter		Dimension A		Dimension B		Double row/Two way	Molded	Machined
	Pilot Bore	mm																	
		in	1.18	1.25	1.50	1.57													
Z06	✓	30.0	31.8	38.1	40.0	63.5	124.2	4.89	126.0	4.96	70.0	2.76	44.9	1.77	72.5	2.85	✓	✓	
Z08	✓						165.6	6.52	164.6	6.48	70.0	2.76	66.6	2.62	92.0	3.62	✓	✓	
Z10	✓						206.6	8.13	203.9	8.03	70.0	2.76	87.6	3.45	111.7	4.40	✓	✓	
Z13	✓						267.8	10.54	265.3	10.44	150.0	5.91	118.7	4.67	141.7	5.58	✓		✓

■ Molded sprocket
 ● Machined sprocket
 ■ Molded sprocket
 ● Machined sprocket



Non standard material and color: See uni Material and Color Overview.



Other sprocket sizes are available upon request.
 Two-part sprocket are available upon request.
 Other bore sizes are available upon request.
 uni Retainer Rings: See uni Retainer Ring data sheet.
 Width of tooth = 12.0 mm (0.47 in)
 Width of sprocket = 42.3 mm (1.67 in)

Max load per sprocket shown does not take bore size into account.
 Please also ensure that sufficient size shaft is chosen for corresponding load.

For correct sprocket position: See uni Assembly Instructions for uni X-MPB.
 For more detailed sprocket information, contact Customer Service.



Expert advice, quality solutions and local service for all your belting needs
www.ammeraalbeltech.com

Ammeraal Beltech Modular A/S
 Hjulmagervej 21
 DK-7100 Vejle

T +45 7572 3100
 F +45 7572 3348
 admin@unichains.com
 www.unichains.com

This information is subject to alteration due to continuous development. Ammeraal Beltech will not be held liable for the incorrect use of the above stated information. This information replaces previous information. All activities performed and services rendered by Ammeraal Beltech are subject to general terms and conditions of sale and delivery, as applied by its operating companies.