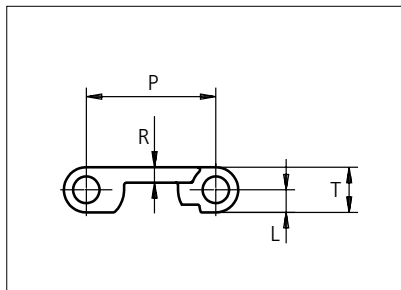




Plastic Modular Belt

Series **uni CNB** Type **18%**



Straight running belt
 Nominal pitch: 25.4 mm (1.00 in)
 Surface type: Flat
 Surface opening: 18%
 Backflex radius: 40.0 mm (1.60 in)
 Pin diameter: 5.0 mm (0.20 in)

| Belt material & color | PP W | mm | in | mm | in | | |
|-----------------------|-------------|-------------|------|------|----|-----|------|
| Pin material & color | PP W | P (Nominal) | 25.4 | 1.00 | T | 8.8 | 0.35 |
| | | R | 3.0 | 0.12 | L | 4.4 | 0.17 |

Non standard material and color: See uni Material and Color Overview.

Alternative pin and lock materials: Pin: PE **W** PA6.6 **B** PBT **LG** SS304 Lockpin: PBT **LG** PA6.6 PP **W** **B** PE

| Belt width | | Permissible tensile force (Belt/pin material) | | Belt weight (Belt/pin material) | | *Min. No. drive sprocket per shaft | Number of wear strips (Min. No.) | |
|------------|------|---|------|---------------------------------|-------|------------------------------------|----------------------------------|----------------|
| mm | in | N | lbf | kg/m | lb/ft | | **Carry (pcs) | **Return (pcs) |
| 77 | 3.0 | 539 | 121 | 0.3 | 0.18 | 2 | 2 | 2 |
| 153 | 6.0 | 1071 | 241 | 0.5 | 0.36 | 2 | 2 | 2 |
| 229 | 9.0 | 1603 | 360 | 0.8 | 0.54 | 2 | 2 | 2 |
| 305 | 12.0 | 2135 | 480 | 1.1 | 0.72 | 3 | 3 | 2 |
| 381 | 15.0 | 2667 | 600 | 1.3 | 0.90 | 3 | 3 | 2 |
| 457 | 18.0 | 3199 | 719 | 1.6 | 1.07 | 4 | 4 | 2 |
| 533 | 21.0 | 3731 | 839 | 1.9 | 1.25 | 4 | 4 | 2 |
| 609 | 24.0 | 4263 | 958 | 2.1 | 1.43 | 5 | 5 | 3 |
| 685 | 27.0 | 4795 | 1078 | 2.4 | 1.61 | 5 | 5 | 3 |
| 761 | 30.0 | 5327 | 1197 | 2.7 | 1.79 | 6 | 6 | 3 |
| 837 | 33.0 | 5859 | 1317 | 2.9 | 1.97 | 6 | 6 | 3 |
| 913 | 35.9 | 6391 | 1437 | 3.2 | 2.15 | 7 | 7 | 4 |
| 989 | 38.9 | 6923 | 1556 | 3.5 | 2.33 | 7 | 7 | 4 |

Additional standard belt widths are available in steps of 76.0 mm (2.99 in). Additional non-standard belt widths are available in steps of 12.7 mm (0.50 in).

| | | | | | | | | |
|------|------|-------|------|-----|------|----|----|---|
| 1977 | 77.8 | 13839 | 3111 | 6.9 | 4.65 | 14 | 14 | 7 |
|------|------|-------|------|-----|------|----|----|---|

Additional standard belt widths are available in steps of 76.0 mm (2.99 in). Additional non-standard belt widths are available in steps of 12.7 mm (0.50 in).

| | | | | | | | | |
|------|-------|-------|------|------|------|----|----|----|
| 2965 | 116.7 | 20755 | 4666 | 10.4 | 6.97 | 20 | 20 | 10 |
|------|-------|-------|------|------|------|----|----|----|

General belt tolerance is +0/-0.4% at 23°C/73°F and 50% RH. For exact belt width contact Customer Service. Non standard belt width on request.

*Max. Load per Drive Sprocket. Belt material: PP 500 N (112 lbf)

**Max. Spacing between wear strips, Carry: 152.0 mm (6.00 in); Return: 304.0 mm (12.00 in)

= Single Link



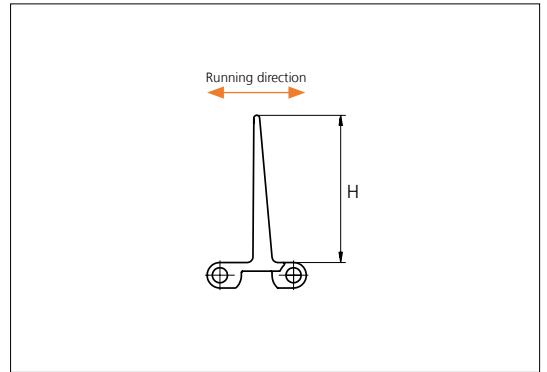
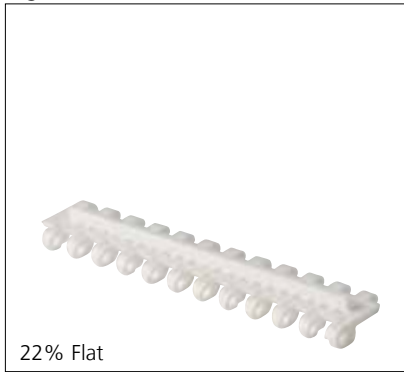
STANDARD

STRAIGHT RUNNING

PITCH 25.4 MM/1.00 IN

Accessories

Flight

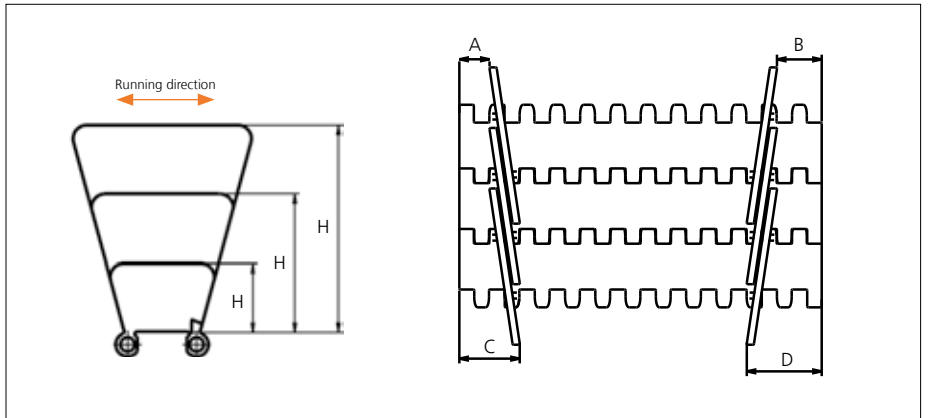


| Type | Material & color | H | | Link size | Width | | Indent | |
|------------|-------------------------|------|------|-----------|-------|-------|--------|------|
| | | mm | in | | mm | in | mm | in |
| 22% Flat | PE PP-I | 5.0 | 0.20 | K300 | 75.9 | 2.99 | 6.4 | 0.25 |
| | | | | | K600 | 152.0 | | |
| Flat/waves | POM-D PE PP-I PP-I | 25.4 | 1.00 | K600 | 152.0 | 5.98 | 0.0 | 0.00 |
| | | 50.8 | 2.00 | | | | | |
| | | 76.2 | 3.00 | | | | | |

Minimum bricklaid indent is 38.1 mm (1.50 in). Increment: 12.7 mm (0.50 in).
 Non Standard material and color: See uni Material and Color Overview.

Accessories

Side Guard



| Type | Material & color | H | | A (Min.) | | B (Min.) | | C (Min.) | | D (Min.) | |
|--------|------------------|------|------|----------|------|----------|------|----------|------|----------|------|
| | | mm | in | mm | in | mm | in | mm | in | mm | in |
| Closed | PP-I | 25.4 | 1.00 | 12.5 | 0.49 | 18.5 | 0.73 | 25.5 | 1.00 | 31.5 | 1.24 |
| | | 50.8 | 2.00 | | | | | | | | |
| | | 76.2 | 3.00 | | | | | | | | |

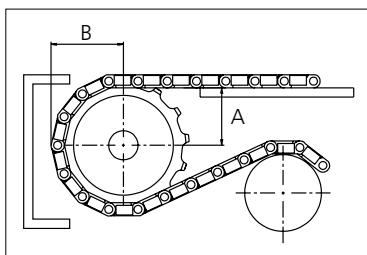
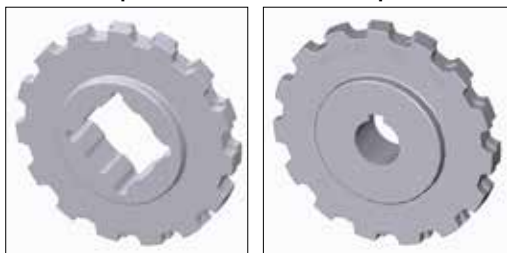
Minimum indent to outside of Side Guard: 14.0 mm (0.55 in). Increment 6.4 mm (0.25).
 Non Standard material and color: See uni Material and Color Overview.
 Backflex radius for Side Guard: 75.0 mm (2.95 in)

Sprocket

| No of teeth | Bore size | | | | | | | | Overall diameter | | Pitch diameter | | Hub diameter | | A-dimension | | B-dimension | | Double row/Two way | Molded | PA6 LG |
|-------------|------------|------|------|------|------|------|------|-------|------------------|-------|----------------|------|--------------|------|-------------|------|-------------|---|--------------------|--------|--------|
| | Pilot bore | in | | 1.00 | | 1.18 | | 1.25 | | | | | | | | | | | | | |
| | mm | 25.0 | 25.4 | 30.0 | 31.8 | 38.1 | 40.0 | mm | in | mm | in | mm | in | mm | in | mm | in | | | | |
| Z10 | ✓ | ● | ● | ● | ● | | | 80.0 | 3.15 | 82.2 | 3.24 | 70.0 | 2.76 | 34.7 | 1.37 | 45.5 | 1.79 | ✓ | ✓ | | |
| Z12 | ✓ | | ● | ● | ● | | | 96.8 | 3.81 | 98.1 | 3.86 | 70.0 | 2.76 | 43.0 | 1.69 | 53.5 | 2.11 | ✓ | ✓ | | |
| Z15 | ✓ | | ● | ● | ● | | | 121.5 | 4.78 | 122.2 | 4.81 | 70.0 | 2.76 | 55.3 | 2.18 | 65.5 | 2.58 | ✓ | ✓ | | |
| Z18 | ✓ | | | ● | ● | ■ | ■ | 146.0 | 5.75 | 146.3 | 5.76 | 70.0 | 2.76 | 67.6 | 2.66 | 77.5 | 3.05 | ✓ | ✓ | | |
| Z19 | ✓ | | | ● | ● | ■ | ■ | 154.2 | 6.07 | 154.3 | 6.07 | 70.0 | 2.76 | 71.7 | 2.82 | 81.6 | 3.21 | ✓ | ✓ | | |

■ Molded sprocket

● Molded sprocket



Other sprocket sizes are available upon request.

Two-part sprockets are available upon request..

Other bore sizes are available upon request.

uni Retainer Rings: See uni Retainer Ring data sheet.

Width of tooth = 12.0 mm (0.47 in)

Width of sprocket = 25.0 mm (0.98 in)

Max load per sprocket shown does not take bore size into account.

Please also ensure that sufficient size shaft is chosen for corresponding load.

For correct sprocket position: See uni Assembly Instructions for uni CNB.

For more detailed sprocket information, contact Customer Service.

Non standard material and color: See uni Material and Color Overview.



Conveyor Belts



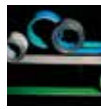
Seamless Belts



Modular Belts



Timing Belts



Transmission Belts



Fabrication & service

Expert advice, quality solutions and local service for all your belting needs
www.ammeraalbeltech.com

Ammeraal Beltech Modular A/S
Hjulmagervej 21
DK-7100 Vejle

T +45 7572 3100
F +45 7572 3348
admin@unichains.com
www.unichains.com

This information is subject to alteration due to continuous development. Ammeraal Beltech will not be held liable for the incorrect use of the above stated information. This information replaces previous information. All activities performed and services rendered by Ammeraal Beltech are subject to general terms and conditions of sale and delivery, as applied by its operating companies.