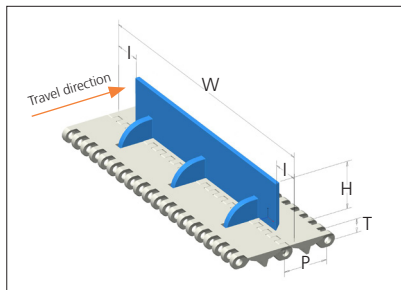
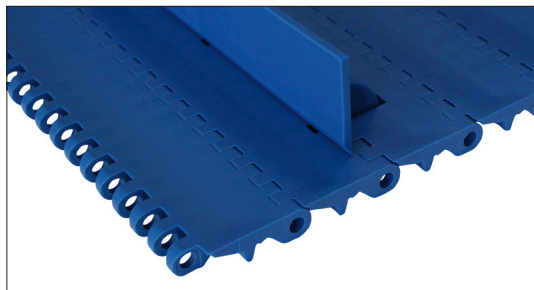




Plastic Modular Belt

uni MPB Pop-up flight



Straight running elevator belt
 Nominal pitch: 50.8 mm (2.00 in)
 Surface type: Flat
 Surface opening: Closed
 Backflex radius: 100.0 mm (3.90 in) min
 Pin diameter: 8.0 mm (0.31 in)

Belt material & color	PP W B	PE-I N B		mm	in		mm	in	
Pin material & color	PP W	PE W		H	54.8	2.16	T	16.0	0.63
Flight material & color	PP-I W B	PE-I W B		I	34.0	1.34	-	-	-
				P	50.8	2.00	-	-	-

Non standard material and color: See uni Material and Color Overview.

Alternative pin and lock materials: Pin: PA6.6 **N** PP **W** PE **W** PBT **LG** SS304

Lockpin: PA6.6 **B** PBT **LG**

Belt load capacity

Belt dimensions						Permissible tensile force (Belt/pin material)				Maximum product load per flight row	
Belt width (W)		Indents (I)*		Flight width (B)		PP/PP		PE-I/PE		Kg	Lbs
mm	in	mm	in	mm	in	N	lbf	N	lbf		
302	11.9	34	1.34	234	9.2	4832	1086	3926	883	12	27
353	13.9	34	1.34	285	11.2	5648	1270	4589	1032	14	31
403	15.9	34	1.34	335	13.2	6448	1450	5239	1178	16	36
453	17.8	34	1.34	385	15.2	7248	1629	5889	1324	18	40
504	19.8	34	1.34	436	19.2	8064	1813	6552	1473	20	44
554	21.8	34	1.34	486	19.1	8864	1993	7202	1619	22	49
604	23.8	34	1.34	536	21.1	9664	2173	7852	1765	24	53

General width tolerance is +0/-0.4% at 23°C/73°F. For other widths contact Customer Service.

*Standard indent 34.0 mm (1.34 in), other indents upon request.

STANDARD

STRAIGHT RUNNING

PITCH 50.8 MM/2.00 IN

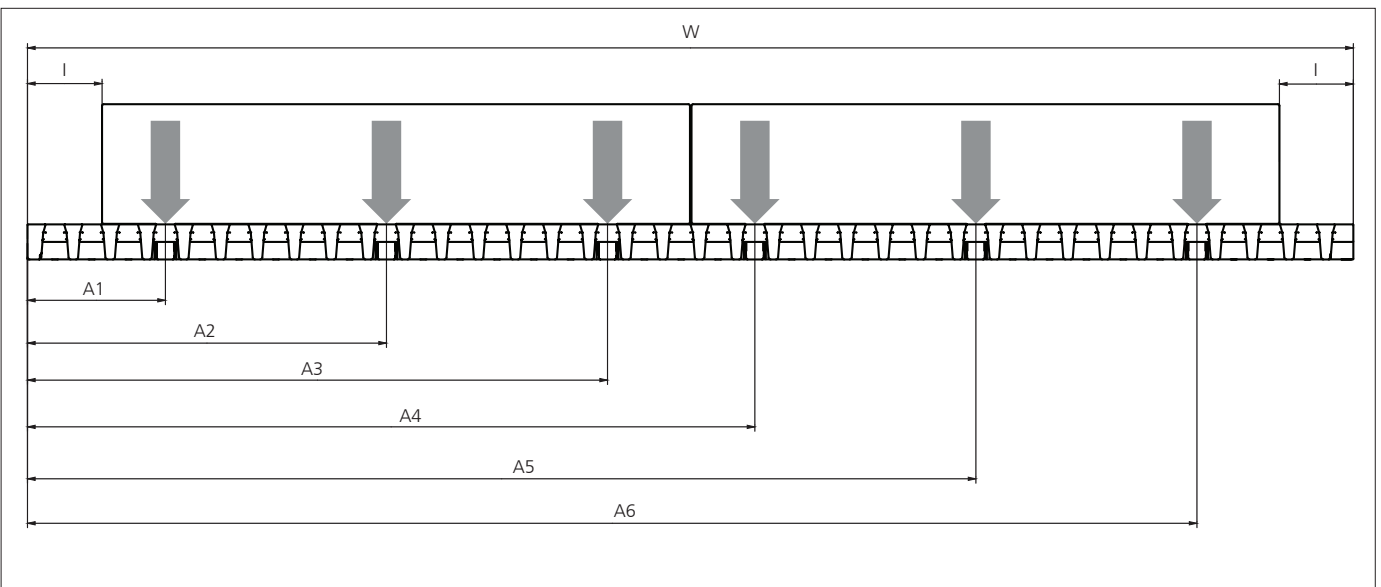
Belt dimensions		Base belt weight (Belt/pin material)				ADD weight per flight row				Construction information		
										Min. no drive sprockets*	No flight cams/ activation wearstrips	Min number of support wearstrips
Belt width (W)		PP/PP		PE-I/PE		PP-I/PP		PE-I/PE		Pieces	Pieces	Pieces
mm	in	Kg/m	lb/ft	Kg/m	lb/ft	Kg/m	lb/ft	Kg/m	lb/ft			
302	11.9	2.5	1.7	2.7	1.8	0.08	0.17	0.08	0.18	2	3	2
353	13.9	2.9	2.0	3.1	2.1	0.10	0.22	0.10	0.23	2	4	2
403	15.9	3.3	2.2	3.5	2.4	0.12	0.26	0.13	0.28	2	4	2
453	17.8	3.8	2.5	4.0	2.7	0.13	0.28	0.14	0.30	3	5	2
504	19.8	4.2	2.8	4.4	3.0	0.14	0.31	0.15	0.33	3	5	2
554	21.8	4.6	3.1	4.9	3.3	0.16	0.35	0.17	0.38	4	6	2
604	23.8	5.0	3.4	5.3	3.6	0.17	0.38	0.18	0.40	4	6	2

*Max. Load per Drive Sprocket. Belt material: POM-DI with snub roller 2000 N (450 lbf) without snub roller 1250 N (281 lbf)

Placing of activation wearstrips

Belt dimensions						Activation wearstrips Distance from belt left hand edge											
Belt width (W)		Indents* (I)		Flight width (B)		A1		A2		A3		A4		A5		A6	
mm	in	mm	in	mm	in	mm	in	mm	in	mm	in	mm	in	mm	in	mm	in
302	11.9	34	1.34	234	9.2	46	1.81	147	5.79	248	9.76	-	-	-	-	-	-
353	13.9	34	1.34	285	11.2	63	2.48	164	6.46	197	7.76	298	11.73	-	-	-	-
403	15.9	34	1.34	335	13.2	63	2.48	164	6.46	231	9.09	332	13.07	-	-	-	-
453	17.8	34	1.34	385	15.2	46	1.81	147	5.79	248	9.76	298	11.73	399	15.71	-	-
504	19.8	34	1.34	436	19.2	63	2.48	164	6.46	265	10.43	332	13.07	433	17.05	-	-
554	21.8	34	1.34	486	19.1	63	2.48	164	6.46	265	10.43	298	11.73	399	15.71	500	19.67
604	23.8	34	1.34	536	21.1	63	2.48	164	6.46	265	10.43	332	13.07	433	17.05	533	20.98

*Standard indent 34.0 mm (1.34 in), other indents upon request.



↓ = Placing of activation wearstrip

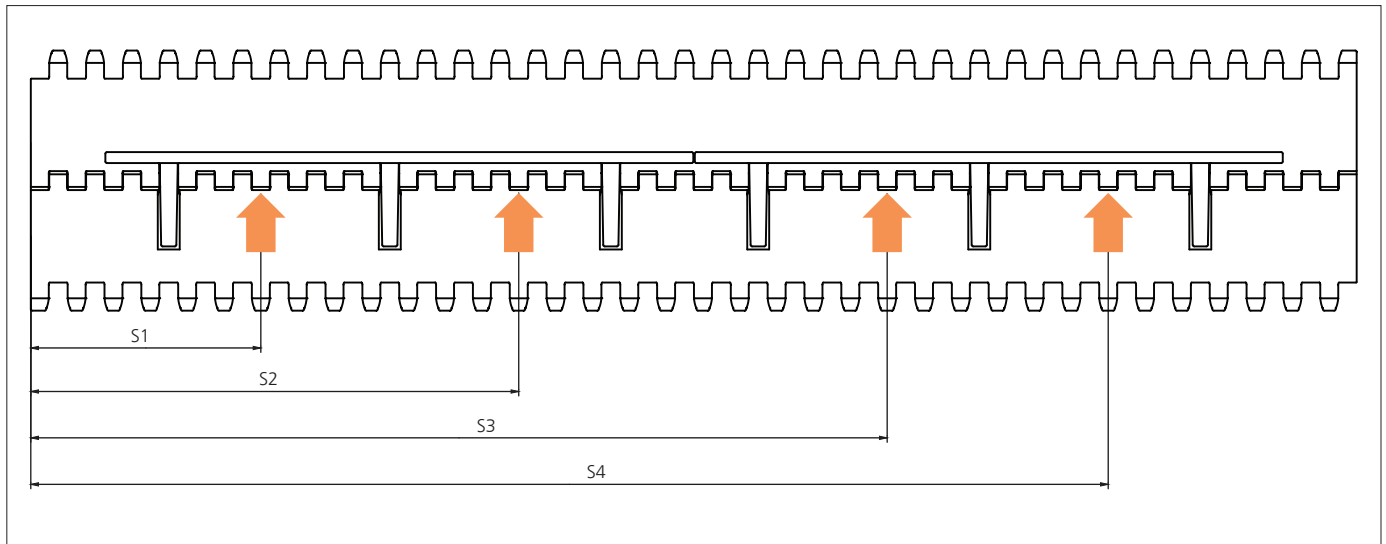
Dimensions for Pop-up flight system are from left hand edge of belt, looking down from top of belt with travel direction moving away from viewing point.

Placing of sprockets

Belt dimensions						Min. No drive sprockets**	Sprocket Position Distance from belt left hand edge							
Belt width (W)		Indents* (I)		Flight width (B)			S1		S2		S3		S4	
mm	in	mm	in	mm	in		mm	in	mm	in	mm	in	mm	in
302	11.9	34	1.34	234	9.2	2	88	3.46	206	8.11	-	-	-	-
353	13.9	34	1.34	285	11.2	2	105	4.13	256	10.08	-	-	-	-
403	15.9	34	1.34	335	13.2	2	105	4.13	290	11.42	-	-	-	-
453	17.8	34	1.34	385	15.2	3	88	3.46	206	8.11	357	14.06	-	-
504	19.8	34	1.34	436	19.2	3	105	4.13	223	8.78	391	15.39	-	-
554	21.8	34	1.34	486	19.1	4	105	4.13	223	8.78	357	14.06	457	18.00
604	23.8	34	1.34	536	21.1	4	105	4.13	223	8.78	374	14.72	491	19.33

*Standard indent 34.0 mm (1.34 in), other indents upon request.

**Max. Load per Drive Sprocket. Belt material: POM-DI with snub roller 2000 N (450 lbf) without snub roller 1250 N (281 lbf)



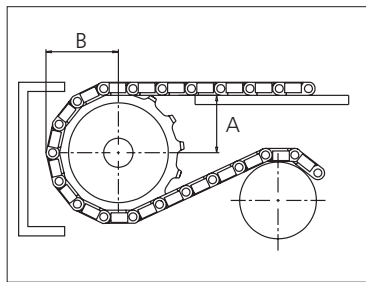
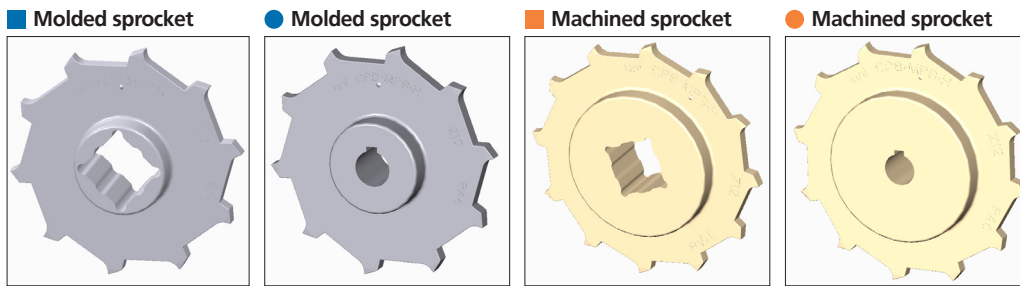
↑ = Placing of sprockets

Ensure sprockets cannot contact the Pop-up flight activation cams. These cams hinge below the belt surface when unsupported by wear-strips. If needed use extra retaining rings each side of floating sprockets to ensure they cannot contact the activation cams but can still float sideways.

Sprocket

No of teeth	Bore size												Overall diameter		Pitch-diameter		Hub-diameter		Dimension A		Dimension B		Single row/One way	Double row/Two way	Molded PA6 LG	Machined PA6 N	
	Pilot bore																										
	mm	in	0.75	0.78	0.98	1.00	1.18	1.25	1.50	1.57	2.36	2.50	3.54	mm	in	mm	in	mm	in	mm	in						
Z08	x					●	●	●	■	■				132.9	5.23	132.8	5.23	70.0	2.75	53.3	2.10	74.9	2.94	x		x	
Z10	x					●	●	■	■				166.3	6.55	164.4	6.47	70.0	2.75	70.2	2.76	90.7	3.57	x		x		
Z10										■	■		166.3	6.55	164.4	6.47	120.0	4.72	70.2	2.76	90.7	3.57	x		x		
Z12	x					●	●	■	■				198.6	7.82	196.3	7.73	70.0	2.75	86.8	3.42	106.6	4.19	x		x		
Z12										■	■		198.6	7.82	196.3	7.73	120.0	4.72	86.8	3.42	106.6	4.19	x		x		
Z16	x					●	●	■	■	■	■		263.8	10.39	260.4	10.25	150.0	5.90	119.7	4.71	138.7	5.46	x			x	

Non standard material and color:
See uni Material and Color Overview.

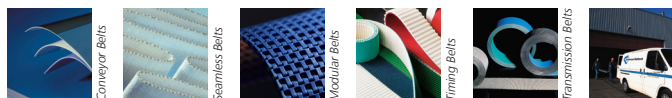


uni MPB Single row – one way sprockets as shown above are recommended for use with Pop-up flight system.
uni MPB Two row – two way sprockets are available and can be used for conveyors which needed to reverse travel direction.
Other sprocket sizes are available upon request.
Two-part sprocket are available upon request.
Round bores are always delivered with keyway.
Other bore sizes are available upon request.
uni Retainer Rings: See uni Retainer Ring data sheet.
Width of sprocket = Single row: 42.3 mm (1.67 in)
Width of tooth = Single row: 9.5 mm (0.37 in)

Max load per sprocket shown does not take bore size into account.
Please also ensure that sufficient size shaft is chosen for corresponding load.

For more detailed sprocket information, contact Customer Service.

uni MPB Pop-up flight C/171018



Expert advice, quality solutions
and local service
for all your belting needs
www.ammeraalbeltech.com

Global Headquarters:
Ammeraal Beltech Holding B.V.
P.O. Box 38, 1700 AA Heerhugowaard
The Netherlands

This information is subject to alteration due to continuous development. Ammeraal Beltech will not be held liable for the incorrect use of the above stated information. This information replaces previous information. All activities performed and services rendered by Ammeraal Beltech are subject to general terms and conditions of sale and delivery, as applied by its operating companies.

T +31 72 575 1212
F +31 72 571 6455
info@ammeraalbeltech.com