



Ammeraal Beltech Modular

Innovative belt and chain solutions
for every industry & application



Content

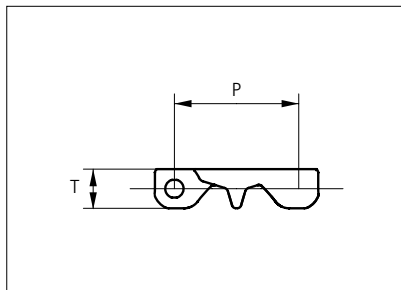
uni ECB

page 3 - 4



Plastic Modular Belt

Series **uni ECB** Type **C**



Straight running belt
 Nominal pitch: 50.8 mm (2.00 in)
 Surface type: Closed
 Surface opening: 0%
 Front- and backflex radius:
 65.0 mm (2.60 in)
 uni Snap link (pinless)

Belt material & color	POM SI W		mm	in		mm	in
		P (Nominal)	50.8	2.00	T	16.0	0.94

Non standard material and color: See uni Material and Color Overview.

POM-SI B is available as MTO and can be used as marker in belt.

Please note that uni ECB in POM-SI blue is not according to the standard color quality for blue. Small variations may occur.

Belt width			Permissible tensile force (Belt material)		Weight (Belt material)		Min No drive sprocket per shaft	Number of wear strips (min no)	
			POM-SI		POM-SI			**Carry (pcs)	**Return (pcs)
	mm	in	N	lb	kg/m	lb/ft			
K1600	402	15.8	4400	899	5.0	3.36	3	3	2
K1800	452	17.8	5500	1236	6.2	4.44	4	4	2
K2000	501	19.8	5500	1236	6.6	4.17	4	4	2
K2400	603	23.7	6600	1484	7.5	5.04	5	5	3
K3000	754	29.7	7700	1731	9.3	6.25	6	6	3
K3200	806	31.7	8800	1978	10.0	6.72	6	6	3

General belt tolerance is +0/-0.4% at 23°C/73°F.

*Max. Load per Drive Sprocket. Belt material: 1500 N (337 lbf).

**Max. Spacing between wear strips, Carry: 152.0 mm (6.00 in); Return: 304.0 mm (12.00 in).

All materials are FDA approved for use with food contact. uni ECB complies to the following standards; EC 1935/2004, EU 10/2011, NSF/ANSI/3-A STANDARD 14159-1.

Material temperature range: -40 to +90°C (-40 to +194°F).

Non standard belt widths: K1600/K2400/K3200 can be bricklaid to make higher belt widths.

Non standard belt widths is not recommended by uni-chains because of cleanability.

= Single Link



STANDARD

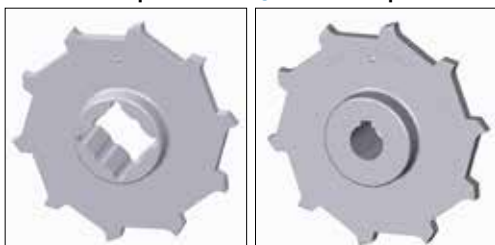
STRAIGHT RUNNING

PITCH 50.8 MM/2.00 IN

Sprocket

No of teeth	Bore size								Overall diameter		Pitch-diameter		Hub-diameter		*Dimension A		Dimension B		Single row/One way	Molded	PA6 LG
	Pilot bore																				
	mm	in	1.00	1.18	1.25	1.50	1.57	2.36	2.50	mm	in	mm	in	mm	in	mm	in				
Z08	✓	●	●	●	■	■			132.9	5.23	132.8	5.23	65	2.56	53.3	2.10	74.9	2.95	✓	✓	
Z10	✓		●	●	■	■			166.3	6.55	164.4	6.47	65	2.56	70.2	2.76	90.7	3.57	✓	✓	
Z10							■	■	166.3	6.55	164.4	6.47	120	4.72	70.2	2.76	90.7	3.57	✓	✓	
Z12	✓		●	●	■	■			198.6	7.82	196.3	7.73	65	2.56	86.8	3.42	106.6	4.20	✓	✓	
Z12							■	■	198.6	7.82	196.3	7.73	120	4.72	86.8	3.42	106.6	4.20	✓	✓	
Z16	✓		●	●	■	■			263.8	10.39	260.4	10.25	150	5.90	119.7	4.71	138.7	5.46	✓	✓	

■ Moulded sprocket ● Moulded sprocket



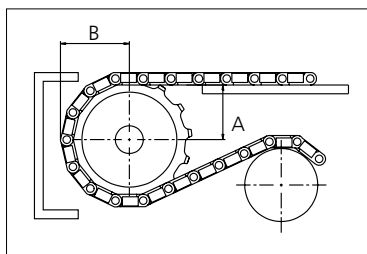
Other sprocket sizes are available upon request.
 Other bore sizes on sprockets are available upon request.
 Round bores are always delivered with keyway.
 Max. load per sprocket shown does not take bore size into account.
 Please also ensure that sufficient size shaft is chosen for corresponding load.
 Width of tooth = Single row 9.5 mm (0.37 in)
 Width of One-part sprocket = Single row: 42.3 mm (1.67 in)

Non standard material and color: See uni Material and Color Overview.

uni UltraClean Two-Part Sprocket

No. of teeth	Bore size				Overall diameter		Pitch-diameter		Hub-diameter		Dimension A		Dimension B		Single row/One way	Molded	PA6 W
	in	1.50	1.57	2.36													
	mm	38.1	40.0	60.0	mm	in	mm	in	mm	in	mm	in					
Z8		■	■		132.9	5.23	132.8	5.23	80.0	3.15	53.3	2.10	74.9	2.94	✓	✓	
Z10		1 ■	1 ■	2 ■	166.3	6.55	164.4	6.47	1126.0 2118.0	14.96 24.65	70.2	2.76	90.7	3.57	✓	✓	
Z12		1 ■	1 ■	2 ■	198.6	7.82	196.3	7.73	1126.0 2118.0	14.96 24.65	86.8	3.42	106.6	4.19	✓	✓	

■ Moulded uni UltraClean TwoPart Sprocket



Width of UltraClean Two-part sprocket = Single row: 44.0 mm (1.73 in)
 Width of UltraClean Two-part sprocket, tooth = Single row: 9.5 mm (0.37 in)

uni Retainer Rings: See uni Retainer Ring data sheet.
 For correct sprocket position: See uni Assembly Instructions for uni ECB.
 For more detailed sprocket information. contact Customer Service.



This information is subject to alteration due to continuous development. Ammeraal Beltech will not be held liable for the incorrect use of the above stated information. This information replaces previous information. All activities performed and services rendered by Ammeraal Beltech are subject to general terms and conditions of sale and delivery, as applied by its operating companies.

Expert advice, quality solutions and local service for all your belting needs
www.ammeraalbeltech.com

Ammeraal Beltech Modular A/S
 Hjulmagervej 21
 DK-7100 Vejle

T +45 7572 3100
 F +45 7572 3348
 admin@unichains.com
 www.unichains.com



Conveyor Belts



Seamless Belts



Modular Belts



Timing Belts



Transmission Belts



Fabrication & service

Expert advice, quality solutions
and local service
for all your belting needs
www.ammeraalbeltech.com

Global Headquarters:
Ammeraal Beltech Holding B.V.
P.O. Box 38, 1700 AA Heerhugowaard
The Netherlands

T +31 72 575 1212
F +31 72 571 6455
info@ammeraalbeltech.com

This information is subject to alteration due to continuous development. Ammeraal Beltech will not be held liable for the incorrect use of the above stated information. This information replaces previous information. All activities performed and services rendered by Ammeraal Beltech are subject to general terms and conditions of sale and delivery, as applied by its operating companies.