

Ammeraal Beltech Modular

Innovative belt and chain solutions
for every industry & application



Content

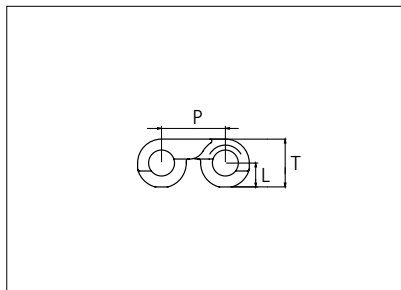
uni NTB C

page 3 - 4



Plastic Modular Belt

Serie **uni NTB** Type **C**



Straight Running Belt
 Nominal pitch: 8.0 mm (0.32 in)
 Surface type: Flat
 Surface opening: Closed
 Backflex radius: R6 mm (0.24 in)
 Pin diameter: 3.0 mm (0.12 in)

| | |
|----------------------------------|----------------|
| Belt material & color | POM-D B |
| Pin material & color | PA6.6 B |

| | mm | in | | mm | in |
|--------------------|------|------|----------|------|------|
| P (Nominal) | 8.0 | 0.32 | T | 6.00 | 0.24 |
| L | 3.00 | 0.12 | - | - | - |

Non standard material and color: See uni Material and Color Overview.

Alternative pin and lock materials: PBT **LG**

| Belt width | | Permissible tensile force (Belt/pin material) | | Belt weight (Belt/pin material) | | *Min No drive sprocket per shaft | Number of wear strips (min no) | |
|------------|------|-----------------------------------------------|-----|---------------------------------|-------|----------------------------------|--------------------------------|----------------|
| | | POM-D/PA6.6 | | POM-D/PA6.6 | | | **Carry (pcs) | **Return (pcs) |
| mm | in | N | lbf | Kg/m | lb/ft | | | |
| 76 | 3.0 | 167 | 38 | 0.4 | 0.24 | 2 | 2 | 2 |
| 153 | 6.0 | 337 | 76 | 0.7 | 0.49 | 2 | 2 | 2 |
| 229 | 9.0 | 504 | 113 | 1.1 | 0.73 | 3 | 3 | 2 |
| 305 | 12.0 | 671 | 151 | 1.5 | 0.98 | 4 | 4 | 2 |
| 381 | 15.0 | 838 | 188 | 1.8 | 1.22 | 4 | 4 | 2 |
| 458 | 18.0 | 1008 | 227 | 2.2 | 1.47 | 5 | 5 | 3 |
| 534 | 21.0 | 1175 | 264 | 2.5 | 1.71 | 6 | 6 | 3 |
| 610 | 24.0 | 1342 | 302 | 2.9 | 1.95 | 7 | 7 | 4 |
| 686 | 27.0 | 1509 | 339 | 3.3 | 2.19 | 7 | 7 | 4 |
| 762 | 30.0 | 1676 | 377 | 3.6 | 2.44 | 8 | 8 | 4 |
| 839 | 33.0 | 1846 | 415 | 4.0 | 2.68 | 9 | 9 | 5 |
| 915 | 36.0 | 2013 | 453 | 4.4 | 2.93 | 10 | 10 | 5 |
| 991 | 39.0 | 2180 | 490 | 4.7 | 3.17 | 10 | 10 | 5 |

Additional standard belt widths are available in steps of 76.2 mm (3.00 in). Additional non-standard belt widths are available in steps of 25.4 mm (1.00 in).

| | | | | | | | | |
|------|------|------|-----|-----|------|----|----|---|
| 1448 | 57.0 | 3186 | 716 | 6.9 | 4.63 | 15 | 15 | 8 |
|------|------|------|-----|-----|------|----|----|---|

Additional standard belt widths are available in steps of 76.2 mm (3.00 in). Additional non-standard belt widths are available in steps of 25.4 mm (1.00 in).

| | | | | | | | | |
|------|------|------|-----|-----|------|----|----|----|
| 1982 | 78.0 | 4360 | 980 | 9.4 | 6.34 | 20 | 20 | 10 |
|------|------|------|-----|-----|------|----|----|----|

General belt tolerance is +0/-0.4% at 23°C/73°F and 50% RH. For exact belt width contact Customer Service. Non standard belt width on request.

*Max. Load per Drive Sprocket. Belt material: POM-D 200N (44 lbf).

**Max. Spacing between wear strips, Carry: 102.0 mm (4.00 in); Return: 203.0 mm (8.00 in).

□ = Single Link



STANDARD

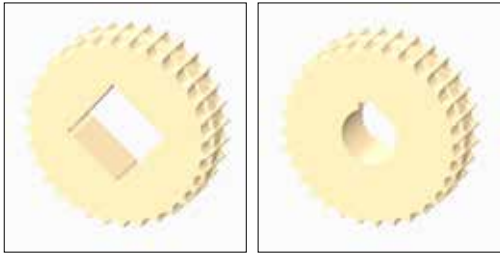
STRAIGHT RUNNING

PITCH 8.0 MM/0.32 IN

Sprocket

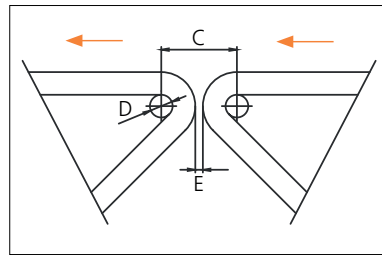
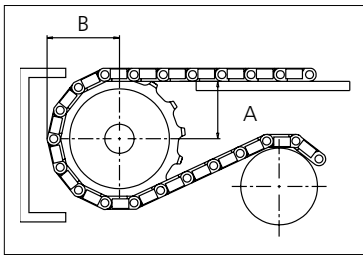
| No. of teeth | Bore size | | | | | | | | | | Overall diameter | | Pitch diameter | | Hub diameter | | Dimension A | | Dimension B | | Single row/Two way | Double row/Two way | Molded PA6 LG | Machined PA6 N |
|--------------|------------|------|------|------|------|------|------|------|------|------|------------------|------|----------------|------|--------------|------|-------------|------|-------------|------|--------------------|--------------------|---------------|----------------|
| | Pilot bore | in | 0.75 | 0.78 | 0.98 | 1.00 | 1.18 | 1.25 | 1.50 | 1.57 | | | | | | | | | | | | | | |
| | mm | 19.1 | 20.0 | 25.0 | 25.4 | 30.0 | 31.8 | 38.1 | 40.0 | mm | in | mm | in | mm | in | mm | in | | | | | | | |
| Z24 | x | | ● | | ● | | | | | | 61.3 | 2.41 | 61.3 | 2.41 | 57.3 | 2.26 | 27.38 | 1.08 | 33.65 | 1.32 | | x | | x |
| Z32 | x | | ● | | | | | | | ■ | 81.6 | 3.21 | 81.7 | 3.21 | 77.6 | 3.06 | 37.61 | 1-48 | 43.8 | 1.72 | | x | | x |
| Z48 | x | | ● | | | | | | | ■ | 122.7 | 4.83 | 122.4 | 4.81 | 118.7 | 4.67 | 58.03 | 2.28 | 64.16 | 2.52 | | x | | x |
| Z60 | x | | ● | | | | | | | ■ | 152.9 | 6.02 | 152.9 | 6.02 | 148.9 | 5.86 | 73.32 | 2.88 | 79.43 | 3.13 | | x | | x |

■ Machined sprocket ● Machined sprocket



Non standard material and color: See uni Material and Color Overview.

Nosebars Min. Dimensions



| | mm | in |
|----------|------|------|
| C | 20.0 | 0.79 |
| D | 6.0 | 0.24 |
| E | 2.0 | 0.08 |

Other sprocket sizes are available upon request.
 Round bores are always delivered with keyway.
 Other bore sizes are available upon request.
 uni Retainer Rings: See uni Retainer Ring data sheet.
 Width of tooth = 9.0 mm (0.35 in)
 Width of sprocket = 25.0 mm (0.98 in)

Max load per sprocket shown does not take bore size into account.
 Please also ensure that sufficient size shaft is chosen for corresponding load.

For correct sprocket position: See uni Assembly Instructions for uni NTB.
 For more detailed sprocket information, contact Customer Service.

uni NTB C/170522



Expert advice, quality solutions and local service for all your belting needs
www.ammeraalbeltech.com

Ammeraal Beltech Modular A/S
 Hjulmagervej 21
 DK-7100 Vejle

T +45 7572 3100
 F +45 7572 3348
 admin@unichains.com
 www.unichains.com

This information is subject to alteration due to continuous development. Ammeraal Beltech will not be held liable for the incorrect use of the above stated information. This information replaces previous information. All activities performed and services rendered by Ammeraal Beltech are subject to general terms and conditions of sale and delivery, as applied by its operating companies.



Conveyor Belts



Seamless Belts



Modular Belts



Timing Belts



Transmission Belts



Fabrication
& service

Expert advice, quality solutions
and local service
for all your belting needs
www.ammeraalbeltech.com

Global Headquarters:
Ammeraal Beltech Holding B.V.
P.O. Box 38, 1700 AA Heerhugowaard
The Netherlands

T +31 72 575 1212
F +31 72 571 6455
info@ammeraalbeltech.com

This information is subject to alteration due to continuous development. Ammeraal Beltech will not be held liable for the incorrect use of the above stated information. This information replaces previous information. All activities performed and services rendered by Ammeraal Beltech are subject to general terms and conditions of sale and delivery, as applied by its operating companies.